



Version 8.1 Release Notes

August 15, 2012 (Revised July 18, 2013)
General Availability

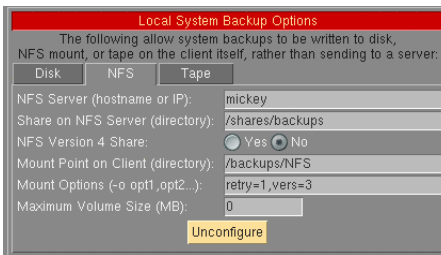
The following release notes are intended to provide details on major features and changes added to **Storix System Backup Administrator (SBAAdmin)** Version 8.1. Users unfamiliar with SBAAdmin should consult the *Storix System Backup Administrator User Guide* for full product details.

New Features and Enhancements

1. Using Remote NFS Share for System Backup and Recovery

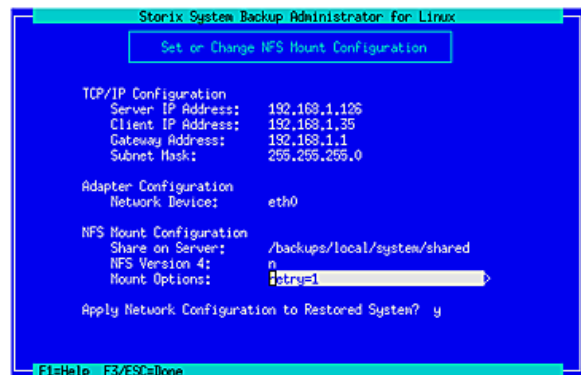
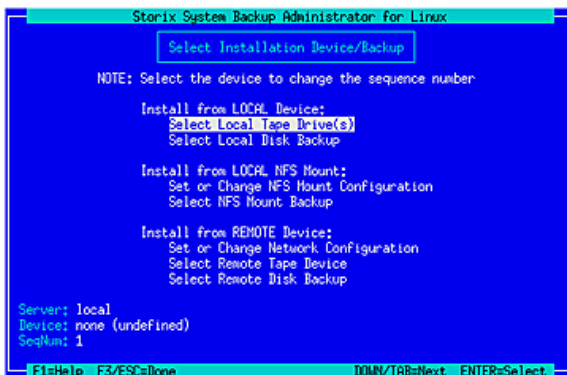
SBAAdmin 8.1 provides support for performing a system backup directly to a locally mounted NFS share on the backup client (supported with **Network Edition** and **Workstation Edition** licenses). The NFS share is first configured as a local system backup device on the client, and will be referred to as device **SBNFS** throughout the application. No SBAAdmin software is required to be installed on the NFS server, and the configuration of the NFS server is the sole responsibility of the user. NFS versions 2, 3, and 4 are supported.

Configuration of the SBNFS device is similar to the following:



In addition to performing a backup to a NFS share, you may now perform system recovery by mounting the share locally on the restore client. Again, no SBAAdmin software is required to be installed on the NFS server, and the configuration of the NFS server is the sole responsibility of the user.

When performing system recovery, new menu options are provided for configuring the NFS share as a restore device and accessing system backups on the share.



2. Linux Device Detection

The SBAAdmin **Adaptable System Recovery (ASR)** process for Linux has always supported recovery to dissimilar hardware. However, at times it was necessary for the user to load additional loadable kernel modules (drivers) in order to utilize devices that were different than the system used to create the backup and/or the boot media. This version of SBAAdmin simplifies the recovery process by detecting and automatically loading the modules necessary to configure disk and network devices.

Device discovery will be available with most 2.6 kernel and later systems. The option to load additional modules in the installation menus is still available.

3. Automatic Copying of Backups

Added at SBAAdmin v8.1.2.0 is the ability to configure backup jobs to automatically copy the backups created as part of the job to an alternate backup storage device (disk, tape, TSM server). This feature is available with **Network Edition** and **Workstation Edition**, and is designed to simplify offsite disaster recovery management.

4. Restore History Logs

SBAAdmin 8.1 has added logging of system recoveries and data restores. The logs are viewed by generating a restore history report using the GUI, Web Interface, or command line (using *streport*).

The restore logs will detail the following information:

- Date of the restore
- Server that data was restored from
- Client the data was restored to
- Details related to the backup (backup ID, job ID, backup client, etc.)
- Data that was restored
- Exit code of the restore process

Only restores performed using SBAAdmin 8.1 and later will be reported.

5. Linux LVM Mirroring

SBAAdmin 8.1 has added support for cataloging Logical Volume Manager (LVM) attributes related to mirrored logical volumes. This information is then used to recreate the logical volume during system recovery with the same mirroring characteristics.

SBAAdmin ASR also provides the ability to change the type of mirroring used or add/remove mirroring of logical volumes during system recovery.

6. Solaris ZFS Encryption

This version has added support for ZFS datasets that utilize encryption. A system backup will catalog the ZFS properties related to encryption and apply these properties at the time of system recovery. Thereby, maintaining the additional layer of security provided by encryption following a SBAAdmin system recovery.

SBAAdmin ASR also provides the ability to change the ZFS properties related to encryption. Including adding encryption to a dataset or removing it entirely.

7. Automatic Update Checking

When starting the SBAAdmin GUI or Web Interface, the Storix website can be contacted to determine if a newer version of the software is available. If a newer version is available, a message will be posted to the interface alerting the user. Update checking may be disabled in the application preferences.

Additional Changes and Enhancements

1. GUI and Web Interface – Both the Xwindows GUI and Web Interface have been updated to make the administration of SBAdmin easier, faster, and more intuitive.
 - Utilizing tabs in the GUI
 - Faster interaction with Web Interface
 - Customization of look and feel
 - Reorganization of menu options
 - New default color theme and updated icons
2. System Recovery Process – In addition to those noted above, various improvements to system recovery have been made to make the process faster, more flexible, and consistent with recent operating systems.
 - Utilizing UUID in /etc/fstab (Linux)
 - No longer mounting CDROM boot media to copy files (Linux)
 - Option to retain original network configuration during system cloning (AIX, Linux, Solaris)
 - Retaining previous bootloader splash screen (Linux, Solaris)
3. Webserver used by Web Interface – The lightweight webserver provided by SBAdmin (*lighttpd*) has been updated to allow customization of run-time options provided by the webserver (ie. disabling SSLv2).
4. Backup Status/Output – The *stprintlabel* command now supports displaying the backup status and output messages of a previously run backup job.
5. Automatic Boot Media Creation – When configuring a system backup job, an option is now available to create both CDROM and network boot images as part of the job.

License Requirements

Updating from a previous version of SBAdmin will require a Version 8 license key to perform the update. Customers with a current maintenance contract may obtain a Version 8 license key at no cost.

Select this link (<http://www.storix.com/upgrade-software>) to check your eligibility for a Version 8 upgrade and to request a Version 8 license key. Refer to the **Support and Upgrade** section if you are not currently eligible.

Evaluation (Trial) License

If you do not have a license for SBAdmin, you may install a free 30-day evaluation key. To download the trial software, go to <http://www.storix.com/download>. Installation instructions are provided. No license key will be required, and the software will be fully functional for 30 days.

If, during or after the trial period, you have obtained a Version 8 license key, you may enter it using the **File→Software License** option from the SBAdmin menu. Your permanent license will be applied and you may continue to use the software without need to change your previous configuration.

You may contact Storix to request a new trial license key if a previously installed trial has expired.

Backward Compatibility

SBAdmin 8.1 is fully compatible with all backups and boot media created with prior versions. However, it is recommended that you have a backup of all systems with your current version prior to updating.

It is necessary to install SBAdmin 8.1 onto ***all clients and servers*** previously configured when upgrading a ***Network Edition*** or a ***TSM Edition*** environment. When updating the administrator, you are prompted to update clients and servers also. If clients and servers have not already been updated, you should answer “yes” to do so. If any clients are not updated because they are unavailable, you will need to update them later before performing any backups to that client.

Support & Upgrade*

Storix provides an *annual software maintenance* contract, which includes full support, maintenance and upgrades to future versions for each SBAAdmin system. One (1) year software maintenance is included for all new licenses.

It is Storix policy to support past releases for a minimum of 6 months following a new version or release. Therefore, support for Version 7.2 will end on **February 15, 2013**.

* Terms of support are subject to change without notice.