



Web Interface Installation Guide

Version 8.2



Web Interface Installation Guide

The purpose of this document is to provide the steps necessary to configure and use the **SBAdmin Web Interface**. The **SBAdmin Web Interface** is an alternative to the **Graphical User Interface (GUI)** or **command-line (CLI)** options for managing backups and restores. Because of limitations in web technologies, some options will be presented differently than with the GUI. However, if you are already familiar with the SBAdmin GUI, users should easily be able to utilize the web interface with little confusion. This document does not include all of the features and options available in the web application, but it is intended to be used as an addendum to the **SBAdmin User Guide** to explain how to configure the web server and the differences you will find between the GUI and the Web Interface.

As of the time of this publication, the **SBAdmin Web Interface** has the following requirements:

- License:** The **SBAdmin Web Interface** is available for **Workstation, Network and TSM Edition** licenses.
- Operating System (webserver):** The SBAdmin Web server is installed on the Administrator system, so the same system requirements apply.
- Additional Software:** The **SBAdmin Administrator** software (Workstation, Network or TSM Edition) must be installed. Because the Web Interface uses a secure web server (https), a built-in random number generator or device like /dev/urandom or /dev/random must be available. If using AIX 5.1 you will need to download the **prngd** binaries. The **SBAdmin Web Server** requires these devices to generate seeds for encryption. *If you have AIX 5.1 you must install the Pseudo Random Number Generator from the AIX Toolbox for Linux page.*
- Operating System (browser):** The **SBAdmin Web Interface** is not operating system specific, but there is a minimum version requirement for the following browsers:
- | | |
|---------------------|--|
| Windows: | Internet Explorer 7.0, Firefox 3.0, Chrome 5.0 |
| Mac OSX: | Firefox 3.0, Safari 5.0, Chrome 5.0 |
| Linux/Other: | Firefox 3.0, Chrome 5.0 |

Configuring and starting the web server

During the initial installation of the software, you will be asked if you want to configure the **SBAAdmin Web Interface**. If you choose not to configure the web interface at that time, you can go back at any time and launch the program to configure and start the web server. You must be logged on as the "root" user to configure and start the web interface. From a terminal on your Administrator system type "`stconfigweb`" and answer the questions that follow. This will set the options for the web server, configure the web server to start automatically on reboot, and start the web server. At the end of the process you will be given the **Uniform Resource Locator (URL)** used by your browser to access the web interface.

Here is an overview of the questions that will be asked during the configuration process:

```
Enter the network port number you would like the SBAAdmin webserver to use
[8080] =>
```

This is the port number the web server will be listening on. We have specified the port 8080 by default as this is an alternate http port specified by the **Internet Corporation for Assigned Names and Numbers (ICANN)**. When you enter the server hostname or IP address as part of the URL, you will need to append this port number to the end preceded by a colon. For example, if your administrator's IP address is 192.168.1.100, the hostname is *mickey* and you use the default port number of 8080, the URL will be <https://mickey:8080> or <https://192.168.1.100:8080>. If you do not already have a web server running on the Administrator, you may use the ICANN designated port 443 for https. If you choose port 443, you will not need to append the port number to the URL of the web server address.

```
Location of the SSL certificate [/opt/storix/samples/sbaweb.pem] =>
```

The **SBAAdmin Web Interface** uses **Secure Socket Layer (SSL)** to ensure the passwords and data are sent securely. SSL requires the use of a secure certificate. There are two acceptable types of SSL certificates: certificates signed by a **Certificate Authority (CA)** and self-signed certificates. We have included a self signed certificate as a default. If you have your own certificate you would like to use, enter the full path to the **.pem** file. If you do not have a signed certificate, you can use the default certificate. *NOTE: If you use the self-signed certificate, you will see a warning message from your web browsers stating that the signing authority is unrecognized. This does not mean the site is unsecured. It is intended to inform users that the signing authority (Storix, Inc.) is not recognized as an official signing authority.*

You may now access the SBAAdmin web interface at <https://adminhost:8080>, where *adminhost* is the hostname of the local administrator system.

Web server customization

After the web server has been configured and started, the following file will contain the settings necessary to run the lighttpd web server used for the web interface.

```
/storix/config/sthttpd.conf
(assuming /storix is your data directory)
```

Settings in this file have been verified for use with the **SBAAdmin Web Interface**. However, you may have a need to change the configuration of the web server so that it may be used in your environment. Any changes should be applied to the `/storix/config/sthttpd.conf` file.

NOTE: This configuration file will be overwritten upon running `stconfigweb`, but will be retained when updating SBAAdmin software.

NOTE: If you choose to modify these settings it may affect the performance and usability of the SBAAdmin web interface. You may also want to review documentation provided at <http://lighttpd.net>.

One common customization you may choose to make is to enable SSL version 2 by adding the following line to the configuration file:

```
ssl.use-sslv2 = "enable"
```

For the settings to take effect, you will need to restart the web server. Depending on the operating system running the web server you will need to run one of the following commands:

Linux

```
/etc/init.d/sthttpd restart
```

Solaris

```
/etc/init.d/sthttpd restart
```

AIX

```
# cat /storix/config/sthttpd.pid
```

(assuming /storix is your data directory)

This command will provide you with the process ID that needs to be killed with the following command.

```
# kill -2 PID
```

```
# /usr/lpp/storix/bin/lighttpd -f /storix/config/sthttpd.conf
```

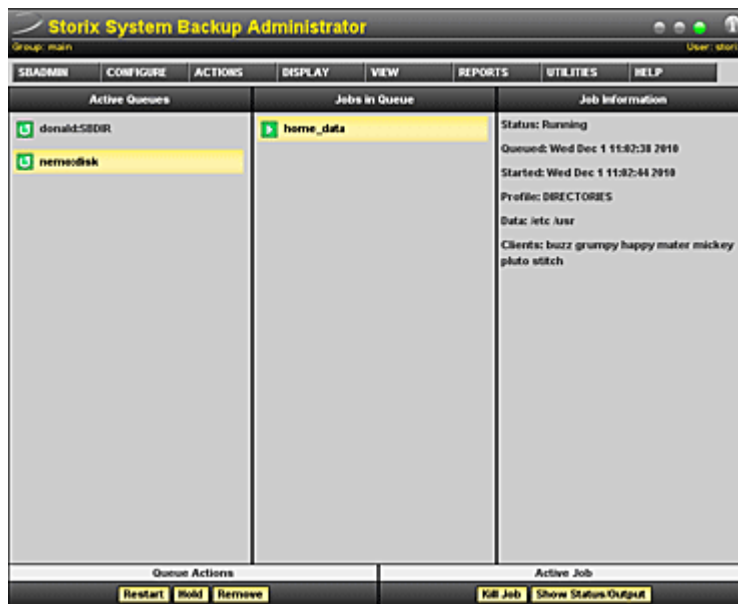
Using the SBAAdmin Web Interface

From one of the recommended web browsers (see above), enter the URL supplied at the end of the configuration. You should see a login window. Enter the username and password you supplied during the configuration.



The image shows a login window for the Storix System Backup Administrator. It has a light gray background with a rounded border. At the top center, the text "Storix System Backup Administrator" is displayed. Below this, there are two input fields: "Username" and "Password". Each field is a simple white rectangle with a thin black border. Below the "Password" field is a "submit" button, which is a small white rectangle with a black border and the word "submit" in black text.

Once you log into the interface, you will see a [navigation menu](#) with a drop-down list of available options.



From this point, most of the options will be similar to the Graphical User Interface. Please refer to the [SBAdmin Users Guide](#) for more instruction on how to configure client and servers, configure and run backup jobs, create boot media for system installation, and restore data.

Differences between the GUI and Web Interface

Web technology is becoming more and more advanced and will no longer have many of the limitations that prevent a web application from behaving like a native GUI application. To date, the most difficult obstacle is browser compatibility. Due to these inconsistencies some features available in the **SBAAdmin GUI** application are either not available or they are presented in a different manner. Here is a list of some of the major differences you will find between the **SBAAdmin GUI** and **SBAAdmin Web Interface**.

1. **Selecting data to restore** – There are limitations to the amount of data that can be displayed within a web browser window. Although that limit is high and may vary between web browsers, a complete file list from a full system backup could take a very long time to display or could cause the browser to crash. Therefore a limit has been set to the number of files that may be displayed to select from for restoring (1,000 files). To limit the number of files to display, there is an option to filter your results by specific terms or wild cards. Just enter either a keyword or wildcard in the **Filter By** field. This will allow you to limit the number of files to select for restore.
2. **Additional Screens** – The SBAAdmin Web interface has additional screens that are not currently available in the SBAAdmin GUI.
 1. **Backup Calendar** – This screen is used to list currently scheduled jobs as well as completed jobs in a calendar format. Options for Month, Week and Day views are available.
From the main navigation, select “View” → “Backup Calendar”
 2. **List Netboot Clients** – This screen lists all configured clients with an additional column describing clients that may have a network boot configuration file that is either active or disabled.
From the main navigation, select “Configure” → “Network Boot/Install” → “List Netboot Clients”
3. **Missing features** – At the time of this writing the following features, available in the **SBAAdmin GUI**, are not available via the **SBAAdmin Web Interface**. These are features that export an X-based application from the client to the Interface and require a local Xserver.
 1. Recreate Volume Groups (AIX)
 2. Recreate Logical Volumes or Filesystems (AIX)
 3. Start Remote Install Manager