



# Solaris System Recovery Guide

Version 7.1



## Trademarks and Copyrights

© Copyright Storix, Inc. 1999-2009 USA

Storix is a registered trademark of Storix, Inc. in the USA

SBAAdmin is a trademark of Storix, Inc in the USA and other countries

Intel, Pentium, IA32, Itanium, Celeron and IA64 are registered trademarks of Intel Corporation.

AMD, Opteron, and Athlon are registered trademarks of Advanced Micro Devices.

Sun Microsystems and the Solaris™ operating system is a trademark of Sun Microsystems, Inc.

SPARC is a trademark of SPARC International, Inc.

All other company/product names and service marks may be trademarks or registered trademarks of their respective companies.

## Publicly Available Software

This product either includes or is developed using source code that is publicly available:

AESCrypt*	Rijndael and Cipher Block Feedback mode (CFB-128) encryption/decryption algorithms	Copyright 1999, 2000 Enhanced Software Technologies Inc. <a href="http://aesencrypt.sourceforge.net/">http://aesencrypt.sourceforge.net/</a>
Xpdf	PDF Document viewer (for AIX)	Copyright 1996-2003 Glyph & Cog, LLC. <a href="http://www.foolabs.com/xpdf">http://www.foolabs.com/xpdf</a>

## \*Encryption Software

**SBAAdmin System Backup Administrator Backup Data Encryption Feature** has a cryptographic component, using **Advanced Encryption Standard (AES)** "Rijndael" encryption algorithm in Cipher Block Feedback (stream) mode (CFB-128), supporting 128, 192 and 256-bit keys.

It is not for export or redistribution to any of what are called the "T-10 Terrorist States" as determined by the U.S. Department of State. SBAAdmin System Backup Administrator Backup Data Encryption Feature has been registered with U.S. Bureau of Information and Security and is distributed under Export Control Classification Number (ECCN) 5D992. This encryption item is authorized for export and re-export under section 742.15 (B)(2) of the Export Administration Regulations (EAR).

# Table of Contents

<b>1. Introduction</b> .....	<b>5</b>
When to Use this Guide .....	5
Terminology .....	5
<b>2. Creating Boot Media for System Installation</b> .....	<b>7</b>
When to Create Boot Media .....	7
When You Should Create New Boot Media .....	7
Creating System Installation Boot Media .....	8
CDROM Image Name .....	8
Hard Disk .....	9
Network .....	10
No-prompt Installation .....	11
Enabling Remote Installation Manager .....	12
Configuring RIM when Creating Boot Media .....	12
Configuring RIM after Booting from the Boot Media .....	13
Connecting to the Remote Install Process .....	13
<b>3. Network Boot/Install Configuration</b> .....	<b>15</b>
Understanding Network Boot and Network Installation .....	15
Enable/Disable Client for Network Boot/Install.....	15
Disable a Network Install Client.....	17
Using an Alternate Network to Restore the Data .....	18
Using a Different Install Server than the Boot Server.....	18
Using the Same Boot Server to Install Different Client Operating Systems .....	19
Updating Network Boot Images .....	19
<b>4. Booting to the System Installation Process</b> .....	<b>20</b>
Booting the Various System Types.....	20
Booting to the System Installation Process.....	20
CDROM .....	20
Hard Disk .....	20
Network Boot .....	21
Completing the Boot Process .....	21
<b>5. Reinstall from a System Backup</b> .....	<b>23</b>
Cloning Systems .....	23
No-Prompt Installation.....	23
Installing from an Encrypted Backup .....	24
Enter a HEX Key .....	24
Enter an ASCII (text) Key .....	25
System Installation Process .....	25
After booting from a network boot server.....	25
Verifying the hardware configuration .....	25
The System Installation and Maintenance Menu .....	26
Using Keys and Getting Help .....	26
Change Installation Server or Device .....	27
Select Local Tape Device.....	28
Select Local Parallel Tape Drives.....	28
Select Local Sequential Tape Drives.....	29
Select Local Disk Backup File .....	29
Set or Change Network Configuration .....	30

Select Remote Tape Device .....	31
Select Remote Disk Backup File .....	31
TSM Configuration .....	32
TSM Client Configuration .....	33
TSM Server Configuration .....	34
TSM Administrator Configuration .....	34
Change the Installation Settings .....	34
Install the System with Current Settings .....	34
<b>6. View/Change Installation Settings .....</b>	<b>36</b>
Select Disks to Use for Installation .....	36
VIEW/CHANGE FDISK Partition Table .....	37
VIEW/CHANGE Slice Table .....	38
ASSIGN all contents of this disk to a Different Disk .....	38
MIGRATE a slice on this disk to a different disk .....	38
DO NOT RESTORE this backup data .....	38
Change FDISK Partition Tables .....	38
Change Slice Tables .....	39
Solaris Volume Manager .....	41
Replication (State) Databases .....	42
RAID Devices .....	43
Understanding RAID 0+1 .....	47
ZFS Filesystem/Volume Manager .....	48
ZFS Pools .....	49
Virtual Devices .....	50
ZFS Filesystems .....	50
ZFS Volumes .....	52
Change Solaris Filesystems .....	53
Filesystem Size versus Device Size .....	54
Change Swap Devices .....	54
<b>7. Install the System .....</b>	<b>56</b>
Verification Process .....	56
Starting the Installation .....	57
Installation Errors .....	57
System Boot Problems .....	57
Network Re-configuration (avoiding conflicts) .....	58
<b>8. System Recovery Utilities .....</b>	<b>59</b>
Configure Remote Install Manager .....	59
Start a Maintenance Shell .....	60
<b>Index .....</b>	<b>61</b>

# 1. Introduction

The [SBAdmin for Solaris System Recovery Guide](#) is a supplement to the [SBAdmin User Guide](#), providing details on reinstalling a Solaris system from a **SBAdmin System Backup**. Note that a System Backup is not limited to reinstalling the same system from which it was made, but it may also be used to “clone” the original system onto different systems containing the same or different hardware.

## When to Use this Guide

This guide provides instructions for booting and reinstalling a system from a SBAdmin System Backup. This document should be reviewed after first installing the software to become familiar with this process and its requirements BEFORE a system recovery is required.

Installation from a System Backup is fairly intuitive, but there is information and steps that must be taken to be prepared in the event that a system re-installation is required. The System Backup contains all of the backup data and the information needed to recreate the system and restore the data, but to access the System Installation Process, boot media must be created. This may be a bootable CDROM, local disk or network boot image.

This guide will refer to information found in the [SBAdmin User Guide](#). When doing so, the reference term or section will be shown in [Blue Text](#). If you need to refer to that information in the Administrator User Guide, highlighted sections (**in bold**) can be found in the [Table of Contents](#), and other terms can be found in the [Index](#).

## Terminology

The system recovery process is straight-forward and provides much instruction and help screens to guide you through the process. Even when creating and changing devices, filesystems, partition maps, logical volumes, etc, the information provided should make the process fairly intuitive. There are a few terms you should understand before beginning the process:

- **Boot Loader:** This is a program that exists on the boot disk or CDROM that is used to find and execute the Solaris kernel. It usually will install an initial filesystem in memory, and execute programs within to load device modules needed to access the root (/) filesystem. The boot loader depends on the *firmware* of the system, since the firmware must know how to load and execute the boot loader.
- **Firmware:** The firmware of a machine is a mini-operating system that is used to detect available boot devices (disks, CDs or network adapters) and load and execute the “real” operating system. The following table shows the system firmware supported by SBAdmin:

Firmware	Supported Systems	Boot Media Types	Boot loaders
BIOS	Intel-based (32-bit, AMD64 and EM64T)	Disk, CDROM, network	Solaris 9: /boot(pcfs) Solaris 10: GRUB
OpenBoot	Sun SPARC servers	Disk, CDROM, network	pboot/mboot

The firmware typically reads a *boot loader* from the boot media, which must be written in a manner that the firmware understands how to find. The boot loader is an additional program that is designed to read and execute the Solaris kernel, providing it information needed to configure additional devices, etc.

- **SVM:** The **Solaris Volume Manager** provides the ability to create devices from *disk slices* that provide optional data *striping* (RAID 0), *mirroring* (RAID 1), *parity disks* (RAID 5) and *Software Partitions* (SoftParts) for enhanced performance, flexibility and availability. SVM is supported on most Solaris versions today. If it is available on your system it will be automatically included on the SBAdmin boot media even if you are not using it. This allows you to implement SVM during the install process if you are not already doing so, creation of new meta-devices or migration of existing filesystems to SVM.

Devices created by SVM are also referred to as “**meta-devices**” as referred to throughout this document. Other references to these devices may include *MDs*, *multi-disks* or *meta-devices*. Meta disk names are in the format “dN”, where N is a number starting with 0 and incremented for each meta-device.

- **ZFS:** Solaris 10, release 6/06 and later include ZFS, an easy-to-use, powerful and flexible way of partitioning your disks into dynamically expandable filesystems and extensible raw volumes. ZFS Pools are created from *disk slices*, then *ZFS Filesystems* and *ZFS Volumes* are created within the pool. If available on the system, ZFS support will be included on the SBAdmin boot media even if it is not currently in use, allowing the creation of new ZFS pools, filesystems and volumes or the migration of existing filesystems to ZFS.
- **Filesystems:** When not using ZFS, most filesystems in Solaris are created within a *disk slice* and have a type of **UFS** (Universal Filesystem). Other supported filesystems include UDFS and PCFS. PCFS filesystems typically reside in a *disk partition* and typically contain DOS data. PCFS is also used on many for the */boot* filesystem, used to configure the system to boot from a hard disk.

## 2. Creating Boot Media for System Installation

The SBAAdmin Backup Administrator User Interface provides a very simple procedure for creating boot media, which is described in this section. This interface may be used to create boot **CDROM** images, **network boot** images, or can configure a local **hard disk** to boot to the system recovery process. This interface may create any of the boot media types. Also refer to the **stmakeboot** command in the [Commands Reference](#), which may be run on any client to make bootable media directly from that system.

### When to Create Boot Media

It is generally a good idea to create bootable media for each individual system that is backed up using SBAAdmin. While not always a requirement, this ensures the boot media is fully compatible with the backup to be restored. Multiple systems that have identical operating system release levels and program support may share the same boot media.

If you attempt to boot from media created using one Solaris release (i.e. Solaris 10 release 4), then attempt to install the system from a backup that was running under release 6, you may run into problems during or after the installation completes. This is because the devices and filesystems created during the system recovery will be later accessed by a different Solaris kernel version that may not be compatible or provide the proper support. For this reason, the SBAAdmin Installation process provides strong warnings if you boot from a different release level kernel than was running at the time the backup was created. The installation process also verifies that your boot media contains the device and filesystem support that is required to install the system, based on those devices or filesystems that were in use at the time of the backup. If the support is not provided by the bootable media, you will be required to remove or change those devices or filesystems that are not supported.

If you have multiple systems, all running the same release level (but not necessary the exact same device support), it is generally safe to use the same boot media to boot and install different systems. Because the boot media is *probably the most important boot media you will ever need*, it is probably a good idea to keep at least one spare or create boot media of different types.

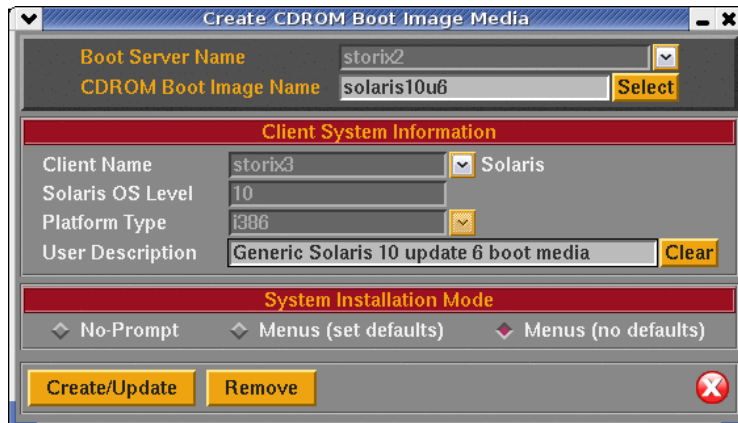
### When You Should Create New Boot Media

1. Any time you operating system updates. Even if the Solaris version or release level does not change, support for devices, filesystems and other programs required to rebuild may have been added, changed or removed, possibly creating an incompatibility between the system created during the SBAAdmin system installation process and the running Solaris system after the installation is completed.
2. Any time you install a new *release level* of [SBAAdmin System Backup Administrator](#). A release level would be the second level of the version number (i.e. "3" in 6.3.0.0). Although we try to maintain compatibility between current and past versions, there may be times when a new feature supported by the backup software also adds new support to the system recovery process. Since the system recovery programs are written to your boot media, you will need to remake the boot media to make sure you are using the latest installation programs.

# Creating System Installation Boot Media

To create the boot media, select **Utilities->Create System Installation Media->(CDROM, Network, Hard Disk or Tape Boot Images)** from the menu bar in the administrator main menu. If using a **Network Administrator**, you will be prompted to select the client on which the boot media will be created. Note that the boot media is created on the selected **client** but may be used to boot other clients of similar system type and operating system release levels.

When selecting A **Solaris** client, a screen similar to the following will appear:



Remember to use the **QuickHelp** (right mouse button) on any button or entry field for details on the use and options for each.

Creation of each media type is described separately:

## CDROM Image Name

This process will make a CDROM ISO image, but will not actually burn the image to the CDROM. This image may be copied to any system where your CD/RW device resides where you can use any software or program you choose to copy the image to the CDROM. When making a CDROM, network support (described below) is always included. If using the *Network Administrator* you can make the CDROM image for any client you have configured.

To create a bootable CDROM, select **Utilities->Create/Manage Boot Media->CDROM Boot Images**.

**NOTE**

Using Workstation Edition, you will not be prompted for Client name and Boot Server Name.

Using Network Administrator a minimum of three fields are required [Boot Server name](#), [CDROM Boot Image Name](#), and [Client Name](#).

The [Boot Server name](#) is the name of the server the boot media will be stored on. Use the drop down arrow to select a configured server. The boot media will be created using the selected client, but will be copied to “CDROM & Network Boot Images” directory as configured on the selected boot server.

The [CDROM Boot Image Name](#) is the name of the image as it will be stored on the filesystem. For clarity you may choose to name the image to reflect the hostname or operating system level of the client. Further detail about the image can be saved in the [User Description](#) field and can be viewed when managing boot media through the sbadmin interface.

The [Client Name](#) is selected with the drop down menu to the right of the field. This is the client used to create the boot media. The clients [Kernel Release Level](#) and [Name Platform Type](#) will automatically be populated into the appropriate fields. Boot media is not specific to this client, and can be used to boot similar systems running the same Linux distribution and update level.

When this process is complete, you may copy this image to a system containing the CD writer device, if there is no cd burner on the Boot Server.

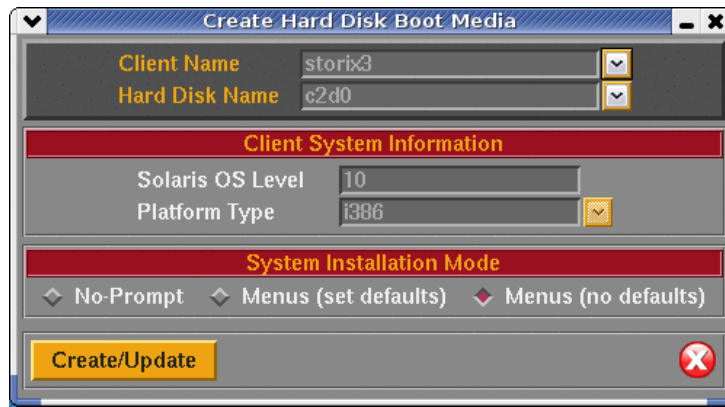
## Hard Disk

If you configured a disk for **System Backups** (see [SBAdmin User Guide](#)), then this disk (or disks) can also be made bootable to boot directly to the system recovery process. This allows you to perform your system backups to a local (or SAN-attached/portable) disk, then boot and reinstall the system from that same disk with no need for other backup media.

**NOTE**

Using this option will not change how the system boots by default. After configuring a disk to boot to the SBAdmin System Install process, you must select to boot from that disk from within your system firmware boot menus.

To create a bootable disk, select [Utilities](#)→[Create System Installation Boot Media](#)→[Hard Disk Boot Media](#).



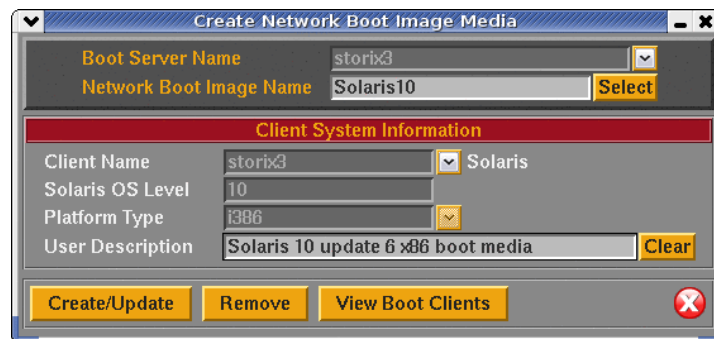
Select the *Client Name* to configure using the drop down arrow to the right. Next, select the disk to configure in the *Hard Disk Name* field by using the arrow to the right of the entry field. When pressing the arrow, the system will be queried to find one or more disks that were configured using the option [Configure a Disk\(s\) for local System Backups](#) in the *SBAAdmin User Guide*. If no disks are listed, then none were configured for system backup/recovery.

## Network

Use this option to create a **network boot image** to be used with various *network boot loaders* to boot a client system over the network from a *network boot server*.

To create a network boot image on any configured client or server and save the image on the boot server, select either:

[Configure→Network Boot/Install→Create/Update a Network Boot Image](#) or  
[Utilities→Create System Installation Boot Media→Network Boot Media](#)



Solaris clients may only be set to network boot from a Solaris boot server.

Select the **Boot Server Name**. This is the server on which the network boot image will stored after it is created. The network boot server may be the same system from which the network boot image is created.

Next, type the name of the boot image in the **Network Boot Image Name** field or select the name of an existing image to overwrite by pressing the arrow button to the right of the entry field. If you enter a unique name, a new image will be created using that name. Note that the network boot "image" actually consists of

several files on disk, but will always be referred to within the application as a single image by a unique **boot image name**. The files are copied into the directory specified as the **CDROM & Network Boot Images** directory when the server was configured. You may also use the select button to the right to choose an existing name. The named image will be overwritten.

Upon successful completion, the network boot image will be created and transferred, if necessary, to the boot server. It will now be possible to configure any client to boot from this image using the option "[Enable/Disable Network Installation of a Client](#)" below.

When all selections are complete, press the **Create/Update** button. A new window will appear with the output of the command to create the media and any error message if they should occur.

## No-prompt Installation

**CDROM** and **Network** boot media may be created with the default installation options set, also allowing the system to be installed as soon as a system is booted from this media. This allows an installation to take place simply by booting from a network boot image, for instance, with no operator intervention required.

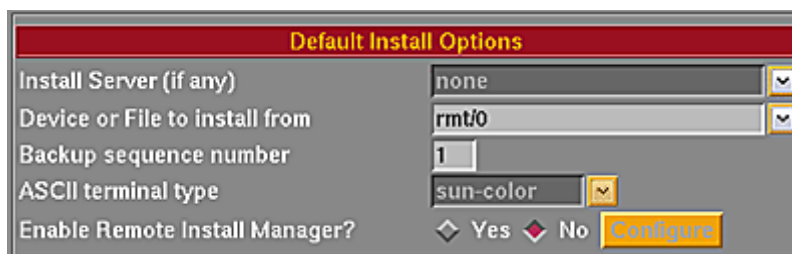
**NOTE**

To prevent a system from being inadvertently reinstalled by simply booting from the wrong device, this option is not available when booting from a hard disk. Be very careful, however, not to leave the CDROM in the drive and the system firmware set to boot from CDROM first, as a no-prompt installation could occur without any user intervention.

Be very careful when using this option, as the user will not have the option of intervening in the system recovery process if the boot media was created for no-prompt installation. The exception, however, is if the defaults are not valid (such as an installation device not being available), or if the backup data will not fit onto the new system's hardware without some re-configuration.

When creating **CDROM** boot media, the following options are available when using the option to [Create System Installation Media](#). For **Network** boot media, the options are available when selecting to [Enable Network Installation of a Client](#). The reason is that, when creating network boot media, a single network boot image may be used for different client systems, and each client system can be configured with different defaults. Refer to each corresponding section for additional details.

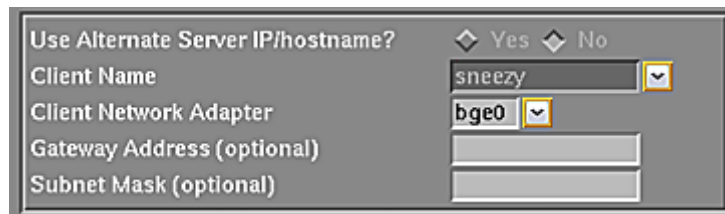
If you select either "**No-prompt**" or "**Menus (set defaults)**" for the **Installation Mode**, additional information will appear within the window, such as in the following example:



Default Install Options	
Install Server (if any)	none
Device or File to install from	rmt/0
Backup sequence number	1
ASCII terminal type	sun-color
Enable Remote Install Manager?	<input type="radio"/> Yes <input checked="" type="radio"/> No <input type="button" value="Configure"/>

The **Install Server** is available only if using a *Network Administrator* license. If the client will install from a locally-attached tape drive, leave this field set to "**none**". If the system will be installed from a remote server, use the arrow button to the right of this field to select a server name.

When selecting a server name, and (when [Enabling a Client for Network Boot/Install](#)) the install server differs from the boot server, more information will appear on the screen below this field:



For the client to be installed from a remote server, you must select the name of the client to be installed (which must have been configured from the *Network Administrator* interface). Also, the network adapter name (of the client) will be required. Other fields are optional, but may be required for the client to contact the server.

Select **Yes** to the [Use Alternate Server IP/Hostname](#) field if the server was configured with an alternate server adapter. In this case, the client will retrieve the backup data from the server using this alternate adapter. Be sure to select the correct adapter name the client will use to contact the server via its alternate adapter.

## Enabling Remote Installation Manager

This feature will allow connection to the SBAAdmin *System Installation Process* from any remote system. With proper authority, a remote user can connect to, diagnose and perform system installation of a system after that system has been booted from the SBAAdmin boot media. This process may be started from the SBAAdmin interface on a Network Administrator system, or from any SSH client application. Therefore, installation of even a *Workstation Edition* system may be managed remotely.

The remote user will be required to enter a password to access the system installation process. This password may have been defined when the boot media was created or may be defined in the system installation menus after booting from the media.

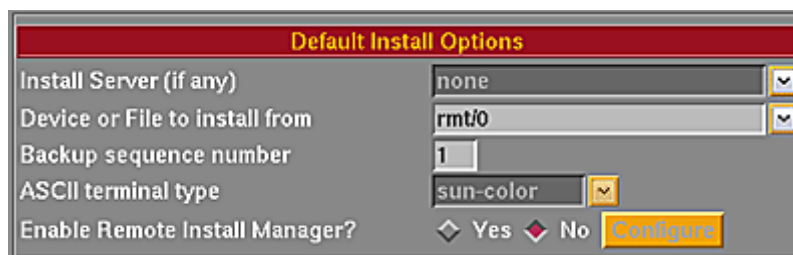
The Remote Install Manager (RIM) may be configured and started in one of two ways:

### Configuring RIM when Creating Boot Media

To start RIM automatically when booting a system from SBAAdmin boot media:

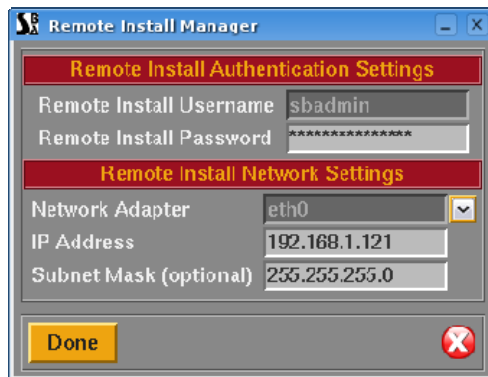
[Utilities](#) → [Create System Installation Media](#)

Select either **Menus (set defaults)** or **No prompt** for the installation mode. The screen will expand to include the following options:



Select "Yes" for **Enable Remote Install Manager**

Select the **Configure** button to the right to configure the settings. You will be presented with the following window:



The **Remote Install Username** is set to “sbadmin” and may not be changed. Enter a password in the **Remote Install Password** field. The password will be necessary to login to the remote install client.

Select the **Network Adapter** that should be configured to connect to the remote install client. If performing a network boot, then you may select **UseBootAdapter** to use the adapter that was used to perform the network boot. If you configured the **Client Network Adapter** on the previous screen, you can select **UseInstallAdapter** to use the same adapter configured for network installation.

Enter the **IP Address** used to configure the network adapter. This field will be disabled if you selected to use either the boot or install adapter, which will already be enabled.

Enter the **Subnet Mask** (if necessary) used when configuring the network adapter. This field will be disabled if you select to use either the boot or install adapter.

After pressing **Done**, the settings will be saved in the boot configuration. The adapter will be enabled, and a remote connection (with appropriate password) will be accepted when booting from this media.

## Configuring RIM after Booting from the Boot Media

To enable RIM from within the *system Installation menus* after booting from the SBAdmin boot media.

From within the system installation menus select [System Recovery Utilities](#). Then select [Configure Remote Install Manager](#), and follow the instructions for [Configuring Remote Install Manager](#) in the Utilities section.

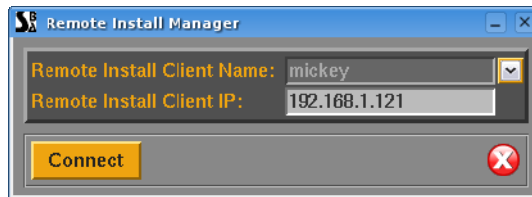
## Connecting to the Remote Install Process

To connect to the remote install client use one of the following:

- a. **SSH** client program (i.e. “`ssh sbadmin@192.168.1.121`”): Note that you will always use the user id “sbadmin” and the password you selected in the previous step. If you do not have an ssh client program, you can use the one installed on the Network or Workstation Admin System. This program is called `strimsh` (i.e. “`/opt/storix/bin/stremsh sbadmin@192.168.1.121`”).

or

Select [Actions](#)→[Remote Install Manager](#) from the **Network Administrator**. A window will appear where you must enter the remote install password:



Select the **Remote Install Client Name** from the drop-down list. The primary IP address of the client will be shown in the **Remote Install Client IP** field. You may change this IP address if you are connecting using a different adapter.

When you press the **Connect** button, a new terminal window will display, and the [System Installation Menu](#) will appear. You can, from this window, perform all system installation and maintenance tasks for the remote client.

# 3. Network Boot/Install Configuration

The information provided in this section will prepare a client system for network boot and installation from a backup server.

## Understanding Network Boot and Network Installation

Any client system defined to the [admin system](#) may be installed or reinstalled from a [System Backup](#). That System Backup will typically reside on the disk or on a tape device attached to a backup server. In order for the client to restore from this backup data, it must first be *booted* over the network from a [boot server](#), and then installed from an [install server](#).

- The **boot server** is used solely to provide a basic operating system with which the client will run the remainder of the installation process. If the boot server is not running the same level of Solaris as the client to be installed or does not have the device support installed for the client, then a network boot image must be created on another system that meets this requirement, and then placed on the boot server.
- The **install server** is used only to provide access to the data to be restored and its operating system level is not relevant. If the backup is on tape, the install server will be the system on which the tape drive is attached. Likewise, if the backup is a disk image file, the disk will be attached to the install server.

Although the boot server and install server are typically the same system, this is not a requirement. If, for instance, there are several systems on which tape drives are attached, the client may be installed from any tape on any system, even though the client is always booted from the same boot server.

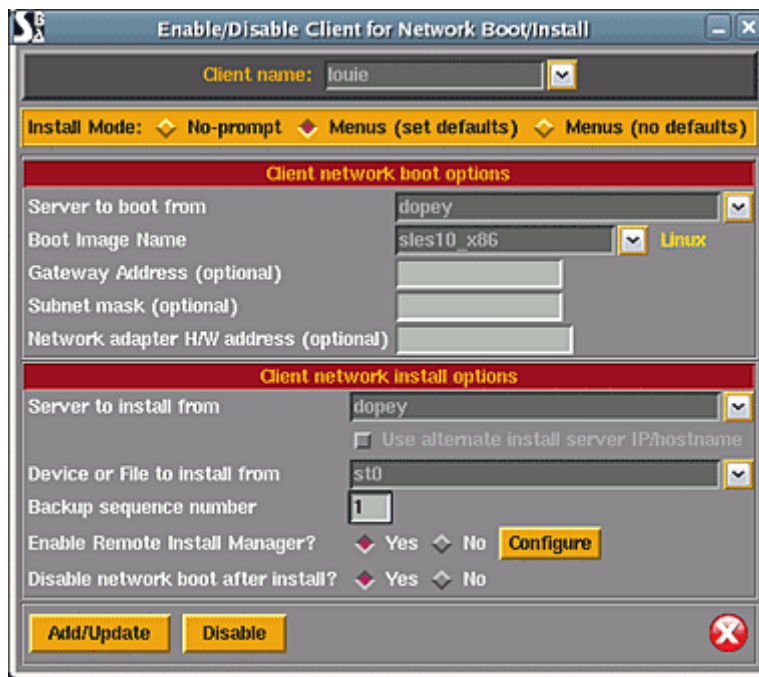
If the client to be booted is running the same level of Solaris as the boot server and all device support for the client's platform type and base system devices is already installed on the boot server, then you may skip directly to the option "[Enable/Disable Network Installation of a Client](#)".

If the client and boot server are to run a different level of Solaris or if the device support for the client is not already installed on the boot server, then you will need to create a network boot image from the client or any other system running the same level of Solaris that you will be installing. The system from which the network boot image is created must also have installed the device support for the client. To create a network boot image on any system and copy the boot image to the boot server, refer to "[Create System installation Boot Media - Network](#)".

## Enable/Disable Client for Network Boot/Install

This section provides details on configuring a client to be booted and installed from a network **boot server** and/or network **install server**. Although the basic settings are simple, there are optional settings which may be used for more flexibility, such as configuring a [no-prompt installation](#) of the client, or installing (reading the backup data) from a different network adapter than the one the client was booted from.

To setup the client, select the option [Configure→Network Boot/Install→Enable/Disable Network Installation of a Client](#) from the menu bar. You will be prompted for the client to configure. Select the client and press the [Continue](#) button. A screen similar to the following will appear:



Options may appear or disappear from this screen depending on your selections. The screen is broken into two main sections; one for configuring the [Client network boot options](#) and one for configuring the [Client network install options](#). The setting for the **Install Mode** at the top of the screen determines whether or not the **Client network install options** section will appear.

The following fields are used to configure the client to boot from a [boot server](#):

1. **Install mode:** You must select here whether you want to perform a no-prompt or menu-driven installation:
  - a. By selecting **No-prompt**, the client will be installed without entering any information on the client. This is referred to as a [no-prompt install](#). If selected, all of the remaining prompts must be filled in.
  - b. If **Menus (set defaults)** is selected, you will be provided the additional prompts now, all of which are optional. The information you provide will appear as defaults on the client after it is booted, but those options may also be changed on the client.
  - c. If **Menus (no-defaults)** is selected, it is assumed that and all install options will be selected from the client install menus once it is booted. When selected, all remaining options will disappear from the screen as they no longer apply.
2. **Server to boot from:** If the server in this field is incorrect, use the arrow button to list and select a different server from which to boot from. By default, the boot server is assumed to be the install server as well. However, the [install server](#) may be changed as described later.
3. **Boot Image Name:** Use the arrow button to the right of the entry field to select from a list of boot images previously created using the [Create Bootable Installation Media \(Network\)](#) option. The boot image name selected will determine the operating system, platform and network type that will be used to install the client.
4. **Gateway Address:** If the client must go through a gateway to reach the boot server, enter the IP address of the gateway machine.

5. **Subnet Mask:** If the client is on a subnet, enter the subnet mask.
6. **Network Adapter Hardware Address:** If the client and server are on the same network (no gateway between them) and you want to be able to boot the client without entering the client and server IP addresses onto the client's network boot screen, you can enter the client's network adapter hardware address (12-digits) here. This is also referred to as the **MAC address**, and is used to respond to a **broadcast boot**. Having the MAC address available on the server allows the client system to be booted without knowing the server or client IP address, as this information is obtained from the server.
7. **Server to install from:** This field will, by default, contain the name of the [boot server](#). If the backup data will be restored from a different server than you booted from, select a different [install server](#) in this field. If the install server differs from the boot server, additional fields will appear on the screen, which are described in the section [Using a Different Install Server than the Boot Server](#) below.

If you wish to install the client using the server's alternate network adapter, select the button next to "**Use Alternate Server IP/Hostname**". If selected, additional fields will appear as described in the section [Using a Different Install Server than the Boot Server](#) below, since the client may need to use a different adapter to reach this alternate adapter on the install server.

8. **Device or File to install from:** Use the arrow button to list and select the device or directory from which the backup data will be restored. If a directory is selected, you will be prompted for the specific [System Backup](#) from which to install. After selecting the backup, the filename of the backup image will be placed in this field, and the **Backup Sequence Number** field will be automatically filled in with the sequence number of the client backup selected. If you select a tape device for this field, the device name will be placed in the field, but the backup will not be read at this time, since the backup may not be in the drive at the moment.
9. **Backup Sequence Number:** If the client will be installed from a tape device, you must manually select the backup sequence number on the tape media to install from. If there is only one [System Backup](#) on the tape, the backup sequence number will be 1 (default). If there is more than one, you must enter the appropriate backup sequence number. If you are unsure as to the correct sequence number to use, view the backup label and use the backup sequence number that corresponds to the desired backup.
10. **Console Device Name:** Select the name of the console device that will be used on the client. If the client is using a graphical display attached to a graphics card on the system, this should be set to "**console**". If the client will be booting from an ASCII (text-based) terminal, you will need to select the terminal type from the "Console terminal type" field below.
11. **Console terminal type:** If the console device selected was a graphical device, the terminal type will be set to **console**. Otherwise, an [ASCII terminal](#) is assumed and you must list and select the specific terminal type. Using the arrow button, you can list the terminal types that are available during the installation process and select one from the list. If you do not select the terminal type at this time, you will be prompted for the terminal type after booting from this image.

When all selections have been made, select the [Add/Update](#) button at the bottom of the screen. If a boot image for the specified platform and network type does not already exist on the boot server, one will be created which will take a minute or two. The client boot information will be saved and the client will be ready to boot and install. Refer to the section [Boot a Client for Installation from a System Backup](#) to initiate the installation process.

## Disable a Network Install Client

It may be desirable to disable the network install for a client once the installation of the client is complete. If the client should inadvertently boot over the network and the client is configured for a [no-prompt install](#), the client may end up being reinstalled automatically.

To un-configure the client, simply select the option [Configure→Network Boot/Install→Enable/Disable Network Installation of a Client](#) from the menu bar. Select the client to disable. The client network install configuration will appear. Simply press the **Disable** button at the bottom of the screen to un-configure the network install.

Un-configuring the network install client will prevent the client from booting over the network. Although the network install will be disabled, the information for the network install will be retained and will be automatically used as defaults should the same client be configured for network install again in the future.

## Using an Alternate Network to Restore the Data

Even though the boot and install server may be the same, it may be desirable to perform the network install (actual restoration of the data) using a different network than was used to perform the network boot. For instance, the client may boot from the server using the *ent0* (ethernet) network, but may want to restore the data from the same server using the *tok0* (token-ring) network instead. This is commonly done in order to redirect the restore data traffic onto a different network than that which is in use by other applications.

To install using an alternate server network, a button is provided on the [Network Boot/Install Configuration Screen](#) labeled "**Use Alternate Install Server IP/Hostname**". If you want the alternate server network connection to be used for network install, press the button associated with each option. If the button is not selected, the default network connection used by the client to reach the server (as defined by the server hostname and network routing information on the client) will be used.

Note that this button will not be available if there was no alternate IP address or hostname setup for network installs from the server. To set the alternate IP address or hostname for a server, refer to the [server configuration](#) options.

If you select this button, additional options will appear which will be required only if you are using a different network adapter on the client system to contact the install server than was used to boot the client. Refer to the section [Using a Different Install Server Than the Boot Server](#) below for additional instructions.

## Using a Different Install Server than the Boot Server

If the **Server to install from** (install server) is not the same as the **Server to boot from** (boot server), or if you selected to **Use an Alternate Server IP/Hostname** to reach the install server, additional fields will appear on the screen allowing you to configure the network differently for contacting the [install server](#):

The screenshot shows a dialog box titled "Client network install options". At the top, "Server to install from" is a dropdown menu with "mickey" selected. Below it is a checked checkbox labeled "Use alternate install server IP/hostname". A section titled "If boot and install network adapters differ:" contains several fields: "Gateway Address (optional)" with the value "192.168.2.1", "Client Network adapter name" with a dropdown menu showing "eth1", "Client IP Address" with the value "192.168.2.124", and "Subnet mask (optional)" with the value "255.255.240.0". At the bottom, there is a partially visible field for "Device or File to install from".

1. **Gateway Address:** If the client must go through a gateway to reach the install server, enter the gateway IP address in this field.
2. **Subnet Mask:** If the network the client uses to reach the install server uses a subnet mask, enter the subnet mask here.

3. **Client Network adapter name:** If the client will use a different network adapter to reach the install server than was used to reach the boot server, use the arrow button to select an adapter name from the list. If you select a different adapter, you must also fill in the additional field as well:
  - a. **Client IP Address:** Enter the IP address associated with the adapter selected. If you are using a different install server than the boot server, the install server must recognize the client by this IP address and the hostname associated with this IP address must have been used to configure the client in the administrator application. If you are using the same server but an alternate server IP/hostname, you must enter the client IP address that will be used to contact the server using the server's alternate address. Refer to the [Configure Servers](#) option for information on using an [Alternate Server Hostname/IP](#) address.

## Using the Same Boot Server to Install Different Client Operating Systems

The same boot server may be used to boot clients of any platform, network type and operating system type and version. The boot server does not need to have any device support installed to support the client's hardware and does not need to run the same operating system as the client. If every system is different, you may create a separate boot image for each client. Or, you may create a single boot image for all clients of similar hardware type and operating system version.

SBAAdmin will create a network boot image from any client, and then copies that boot image to the boot server. Each boot image is saved under a different name (of your choosing) and may be separately selected when you configure a client to network boot. This allows a single boot image to be used to install different client systems.

This 2-step process is described above in this section. First, [Create a Network Boot Image](#) (which also copies the boot image to the boot server), then [Enable the Network Install of a Client](#) by selecting the boot image on the server you previously created.

## Updating Network Boot Images

If you have updated the client operating system or installed new *base system hardware support* (network devices, disk drives, display adapters) or onto a system that you previously created a network boot image from, you will need to recreate that network boot image before the new device support will be accessible to the clients booting from that image.

After installing the new device support, simply follow the instructions for [Create/Update a Network Boot Image](#) to recreate the boot image and copy to the boot server. If you recreate the boot image for the same platform, network and Solaris level, it will not be necessary to reconfigure the clients for network boot/install since the clients using the previous boot image will automatically begin using the newly created boot image.

# 4. Booting to the System Installation Process

## Booting the Various System Types

This section will provide general guidelines for booting a system to the [Installation and Maintenance Menu](#), used to install a system from a [System Backup](#). Note that the steps differ widely between systems and new systems are being introduced frequently. If you are not familiar with the process of booting your system from different media, you should refer to your system documentation for detailed instructions.

To begin the system recovery process, the client system must be booted from [SBAdmin Boot Media](#). This may be a local bootable cdrom or a network boot image stored on a boot server. In any case, the remainder of the installation process will be the same.

The instructions for booting the system vary for each boot type and also differ greatly depending on the type of the machine to be booted. SBAdmin supports Solaris 9 and 10 on *Intel-based 32 and 64-bit* systems which use *BIOS* firmware, and Solaris 9 and 10 on SPARC systems, which use *OpenBoot* firmware. The exact details of how to boot each can vary with each model of hardware and version of firmware.

Although specific instructions on booting the systems from the installation media are not described here, here are some hints to help get you started:

## Booting to the System Installation Process

### CDROM

If using *BIOS*, your system BIOS must be configured to allow booting from CDROM. If your firmware (BIOS/OpenBoot) attempts to boot from a hard disk before booting from CDROM, you will need to change this in case there is already a bootable hard disk in the system. Typically the BIOS can be accessed on most *Intel*-based (x86) systems by pressing the **Delete** key immediately after the display messages begin to appear. Once your BIOS is setup to boot from the correct media, just insert the CDROM and turn on or reset the system.

If using *OpenBoot* (OB), you can specify which device to boot from at the *OpenBoot Prompt* (OBP). To access the OBP, at system initialization (soon after power-on), select the key combination "**stop-a**". This will prevent the system from booting to the previously configured boot device so that you can interactively select which device to boot from. You can get a list of devices to enter at the OBP by using the **devalias** command. For cdrom, you will enter the following at the OBP prompt:

```
ok> boot cdrom
```

### Hard Disk

To install from a hard disk configured as a system recovery boot disk, you must select to boot from the disk within the *BIOS or OpenBoot* options. Typically the BIOS can be accessed on most *Intel*-based (x86) systems by pressing the **Delete** key immediately after the display messages begin to appear.

Assuming your firmware is setup to boot by default from the correct media, just turn on or reset the system. The remainder of the boot process will complete without further interaction.

## Network Boot

To network boot an *Intel-based* system with [BIOS](#):

Most BIOS-based systems are not, themselves, network boot capable. However, if you have a network adapter card with network boot capabilities, you can have the system BIOS boot to the firmware on the network card. Therefore, the network card will be used to provide the network boot capabilities the system firmware does not.

To initiate a network boot, follow these steps:

1. When the system begins to display messages, press the **<Delete>** key several times until the setup menus appear.
2. Select **Advanced CMOS Setup** from the menu.
3. Instructions vary at this point. You should select an option such as “**Boot Sequence**” or “**1st Boot Device**” to change the device the system will boot from.
4. Select **Network**, or the specific network adapter to boot from.
5. Exit the setup menus to boot from the selected device

Depending on the firmware of your network adapter, you may be provided the option of entering the client and server IP address (and optional gateway address). If your boot server is configured with your *network adapter hardware (MAC) address*, you may perform a *broadcast boot* without entering the IP addresses. If not, you will need to enter this information. If you are booting across a gateway, you must enter the client, server and gateway addresses (in which case a broadcast boot is not possible).

If you follow the instructions provided here, and/or on the screen, and the boot process does not work (or no network boot option is provided), then neither the system nor your network adapter are boot-capable.

To network boot **SPARC** systems using [OpenBoot](#) firmware:

SPARC systems network boot directly from OpenBoot (OB) without a boot loader. You must specify the OB device name to boot from. For network devices, there is often an alias established in OB that points to the OB device name. This is because the OB device name is rather lengthy and complicated.

From the OBP, enter the following line to boot from the network adapter.

```
ok> boot net
```

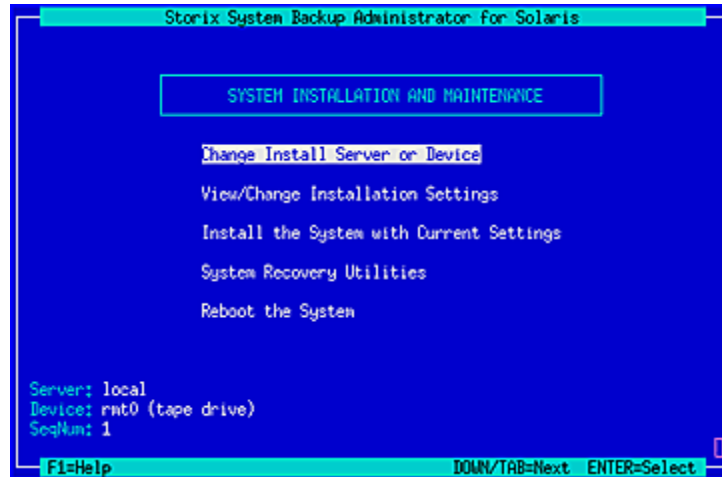
## Completing the Boot Process

If booting from a network [boot server](#) and the client is configured for [no-prompt install](#), the installation will proceed without any user prompts. This assumes that a console and restore device was pre-determined and the original system hardware from the backup system is compatible with the hardware of the system being installed, thereby requiring no user changes.

After a short time, the following **Installation and Maintenance** screen will appear:



The menus may appear differently on your console, depending on the capabilities of your display driver. The SPARC graphic console, for example, does not support color or most graphics characters.



The detailed instructions for using the options on this menu are provided in the sections [Reinstall a System from a Backup](#) and [View/Change Installation Settings](#).

# 5. Reinstall from a System Backup

A [System Backup](#) may be used to reinstall either the original system or a different system with either the same or different hardware configuration. To initiate the installation, you must first boot the client from CDROM, network boot server, or local (internal, or external/portable) disk, using the instructions found in the section [Booting to the System Installation Process](#).

To setup a client system to be installed from a System Backup on a network install server, you must first configure it using the process described in the section [Enable/Disable Network Installation of a Client](#).

## Cloning Systems

"Cloning" a system means to install a system from a backup originating on another system. The system from which the backup was made may be identical or completely different than the system you are installing.

If the system to be installed is identical in hardware type and configuration to the one the backup was made from, the installation may be performed with no customization required. However, if the systems differ, there may be changes required. For instance, if the disk configuration on which the volume groups were placed is not available on the new system, messages will be displayed that the original disks are not available and you must select new physical volumes into which the volume groups will be placed. See [View/Change Installation Settings](#).

## No-Prompt Installation

If the system is set to [no-prompt installation](#), the [Installation and Maintenance Menu](#) will not appear (as described in the following section), but the installation will proceed without any input from the user. If your boot media was created for a no-prompt installation, a banner will display as follows:

```
=====
                        !!!! NO-PROMPT INSTALLATION !!!!
=====
The installation process was set to no-prompt mode. The installation
will continue with no prompts unless a problem occurs requiring user-
interaction.
      IF YOU DO NOT WANT THIS MACHINE TO INSTALL AT THIS TIME,
      YOU HAVE 60 SECONDS TO TURN OFF THE SYSTEM POWER!
=====
```

As indicated, you will have 60 seconds to turn off the system to prevent the system recovery process from continuing (and possibly overwriting all data on the system). There is no way to manually interrupt an install process created for no-prompt installation and cause it to display the installation menus.

However, if any error occurs, such as an install server or device not being available, or if the backup data read from the installation media cannot be installed onto the detected hardware without user intervention, an error message will occur and the [System Installation Menus](#) will appear.

Refer to [Creating Boot Media](#) and [Enable/Disable Network Installation of a Client](#) for information how to pre-answer any questions normally asked during the install process which are required for a no-prompt installation. If configured for no-prompt installation, the installation process will proceed automatically as follows:

1. The defined install server and device will be checked to ensure they are available and readable

2. The selected backup will be read and the installation information will be extracted
3. The configuration information from the backup will be compared against the current system configuration to ensure that everything may be recreated according to the original backup data. If there are problems which can be corrected, they will be corrected automatically. For instance, if a disk has changed sizes, a filesystem may be automatically reduced in size to make it fit.

If there are any problems preventing the installation from continuing without user-interaction, such as no disks matching the original system, or if the disks on the new system are not large enough to contain the original data, the system will enter prompted mode and the installation menus will appear in order for the user to make changes to correct the problems before continuing.

## Installing from an Encrypted Backup

If the backup to be restored from was encrypted during the backup process, it will be necessary to decrypt the data during the restore. Unlike restoring data on a live system, where the encryption keys are available on the backup system, the encryption key must be entered manually during the system installation. The encryption keys are not stored in the boot media or the backup information as this might be penetrable to hackers.

**NOTE**

As warned during the backup process, an encrypted backup **cannot** be restored without the proper *encryption key*. This key may not be retrieved from the backup, nor can SBAdmin assist in providing the correct key. If you do not have the proper encryption key needed to decrypt this backup, you will **not** restore this data!

The encryption key is a value that the user defined prior to performing the backup. If the encryption key is not known, you will not be able to restore the system from this backup. However, to make encryption keys easier to remember and/or enter, it may be entered either as a hexadecimal number or an ASCII text equivalent (if this was the form used to create the original key).

When selecting to install from an encrypted backup, the following message will appear:

```

=====
                          BACKUP DATA IS ENCRYPTED
=====
To read the backup data, an encryption key is required. You may supply
a 32-byte HEX key to decrypt the data. If you used a 16-byte
ASCII (text) key to generate the HEX key, you may also enter it here.

Select one of the following:
    1) Enter a HEX key
    2) Enter an ASCII (text) key
    3) Start a shell

==>

```

Select the appropriate option for entering either a HEX or ASCII encryption key. The third option may be used to start a shell to type commands at the command line should you need to perform system recovery without reading the backup data.

### Enter a HEX Key

The length of the key will depend on the number of bits of encryption. For 128-bit encryption, a 32-byte hexadecimal number is required. For 192-bit encryption, a 48-byte number is needed, and for 256-bit encryption, a 64-byte hex number is needed. Select option 1 from the list above, then when prompted to

"Enter your 32-byte HEX key (or press Enter to reselect key type)", enter the key, or press Enter to return to the options above.

## Enter an ASCII (text) Key

The length of the key will depend on the number of bits of encryption. For 128-bit encryption, a 16-byte ASCII string is required. For 192-bit encryption, a 24-byte string is needed, and for 256-bit encryption, a 32-byte string is needed. Select option 1 from the list above, then when prompted to "Enter your 16-byte ASCII (text) key (or press Enter to reselect key type)", enter the key, or press Enter to return to the options above.

The key you enter will be converted to an appropriate hexadecimal number and used to decrypt the data, just as if you entered the hex key yourself.

Upon entry of a valid key, the restoration of the data will continue. If an invalid key is entered, you will be informed so, and returned to the above menu of options.

# System Installation Process

## After booting from a network boot server

When the system is booted from the network, the client network installation options will also be copied from the boot server to the client. Any installation options setup when the client was configured for network boot (see [Enable/Disable Network Installation of a Client](#)) will be used by default for the installation. These pre-set defaults may include the install server and device, the console device and terminal type, the backup sequence number, or anything else required for the installation to proceed with no required input from the user. If the user selected a no-prompt installation (see [No-Prompt Installation](#) above) the installation will continue automatically. Otherwise, the installation menus will appear and the user may manually change any prior defaults, add any settings that were not pre-configured, or continue the installation process with the current settings.

## Verifying the hardware configuration

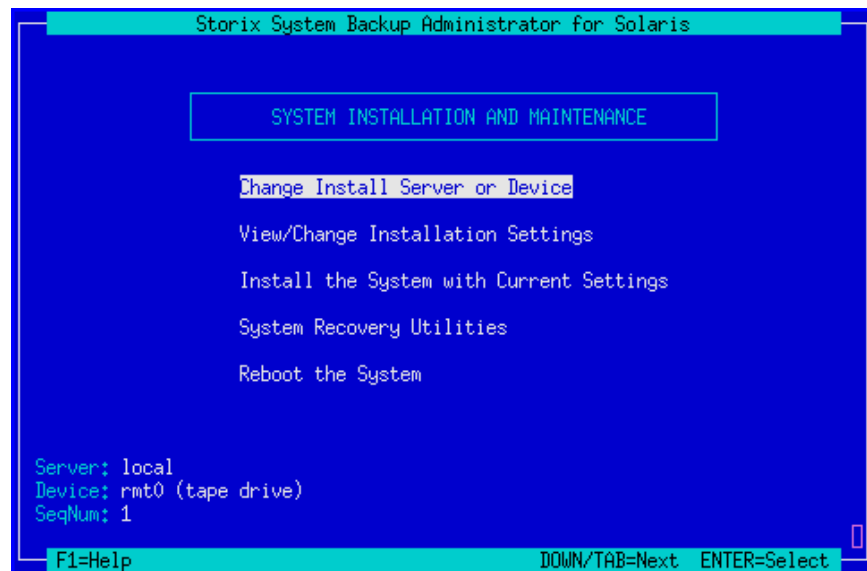
Once the backup media is selected, and you chose to either continue the installation with the current settings or to change the volume group, logical volume or filesystem information, the following will occur:

1. The disks defined on the backup are compared against the current system's hardware configuration. If there are problems that would prevent the backup from being installed onto the system, such as missing disks or disks that are too small to contain the backup data, a list of messages indicating the problems will be displayed and the user will be required to either make changes manually or may select to **automatically fix** any problems that are non-fatal.
2. Non-fatal errors are those that require changes to the configuration in order to allow the data to be restored, although some settings may differ from those of the original system. There are errors that may be automatically fixed by the installation process. For instance, there may not be enough space on the newly detected disks to build the partitions, slices or filesystems as they were previously defined. If such a situation occurs, you will be provided the option of automatically fixing the errors. This might include automatically reducing filesystem sizes to make them fit onto the new hardware. You may also choose to change any system installation settings manually to either add more disk space or change other SVM, ZFS or filesystem attributes that would allow the system storage to be created as desired.

More details of the verification that takes place is described later in [Verification Process](#).

# The System Installation and Maintenance Menu

When the boot process has completed, the **System Installation and Maintenance Menu** will appear:



## Using Keys and Getting Help

Because these menus are designed to appear on both graphic and serial (ASCII), the menus are provided in a form viewable on **ASCII terminals**. The use of the mouse is not available. Most keyboards will support arrow keys while others do not. Also, some keyboards have page up and page down keys, help keys, etc, that others do not. For this reason, there is a variety of methods which may be used to traverse the menus and options in the installation screens:

- To move between menu options or entry fields, use the **Up-arrow** and **Down-arrow** keys on the keyboard. If your arrow keys do not work, you can use the **TAB** key to move between options.
- **Function keys** available at any point are shown in the status bar at the bottom of the screen. If the function keys (**F1** to **F4**) do not work on your screen, you can use **SHIFT-1** to **SHIFT-4** instead. This would be the same as typing "!", "@", "#", or "\$" respectively.
- To complete any selection, press the **Enter** key.
- To return to a previous screen, saving your current selections if applicable, use the **F3** or **ESC** (escape) key
- For pop-up lists, help screens and other messages, you may use the arrow keys to move up and down the list or to scroll the text. You may also use the **Page-up** and **Page-down** keys, if available, or use **CTRL-N** for 'next page' and **CTRL-P** for 'previous page' if not.

**Help Windows:** The **F1** or "!" key (**SHIFT-1**) may be pressed at any field or menu item to obtain help instructions, detailing the use and options for the corresponding item. A help window will appear in the center of the screen as in the following example:

```

HELP
Listed are the "Backup Disks", which are the names of the
disks at the time the backup was taken (which may differ
from the current disk name if installing onto a different
disk configuration).

The system automatically attempts to assign a "Backup Disk"
to a "Current Disk", which is a disk detected on the current
system. If the backup disk matches a current disk, it is
assigned. Otherwise, a different current disk is assigned to
the backup disk if it is large enough to contain the data.
[More] F1=Keys

```

If the help information is lengthy for a particular option (indicated by **[more]** at the bottom), it may be necessary to page the message using the page or control keys described above. To remove the help window and return to the previous entry, press the **F3** or **ESC** key.

**Pop-up List Options:** Pop-up lists are available for many entry options. When supported, "**List=F4**" will appear at the bottom of the screen. At that field, you may press the **F4** or "**\$**" key (**SHIFT-4**) to list the available options for the corresponding field and select an option from the list. To select an option, use the arrow keys to highlight the desired option and press **Enter**. The selected option will be placed in the entry field and the pop-up window will disappear.

## Change Installation Server or Device

The default installation server and device, if any, will be displayed at the bottom of the screen. If the system was booted from the network, the install server will default to the boot server unless a different install server was defined when the client was configured for network boot.

Select the **Change Installation Server or Device** option if you wish to change the server on which the backup media is attached, or the remote or local installation device. You will only be able to select a remote server when using the **Network Administrator** license. After selecting option this option, you are presented with one of the following additional option screens:

**NOTE**

The following menu options may differ if the system from which the boot media created was a TSM node. Refer to the TSM Configuration section below for information and examples.

```

Storix System Backup Administrator for Solaris

Set Install Device or Server

NOTE: Select any tape device to change
the backup sequence number

For LOCAL Installation:
Select Single Tape Drive
Select Parallel Tape Drives
Select Sequential Tape Drives
Select Local Disk Backup File

For NETWORK Installation:
Set or Change Network Configuration
Select Remote Tape Device
Select Remote Disk Backup File

Server: local
Device: rmt0 (tape drive)
SeqNum: 1

F1=Help F3/ESC=Done DOWN/TAB=Next ENTER=Select

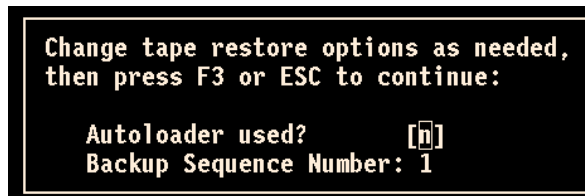
```

Highlight the option you wish to select using the up and down arrow keys on the keyboard. Each option is described in detail below:

## Select Local Tape Device

You may change the installation settings to allow installation from a local tape drive. When selecting this option, a list of local tape devices will be displayed and you may select one tape drive from the list. If the backup was created using a *parallel virtual device*, you must instead use the option below.

After selecting a tape device, the following window will pop up on the screen:



If an [Autoloader](#) is used with the device, select 'y' in the **Autoloader used?** field. If the backup you wish to install from is not the first backup on the media, type the [backup sequence number](#) in the **Backup Sequence Number** field. Refer to the backup sequence number in the backup label if you do not know the correct backup sequence number to use. Also refer to [Virtual Devices](#) for more information on the use of sequential autoloaders. Once you have selected the desired options, press **F3** or **ESC** to return to the [Change Installation Server or Device menu](#).

## Select Local Parallel Tape Drives

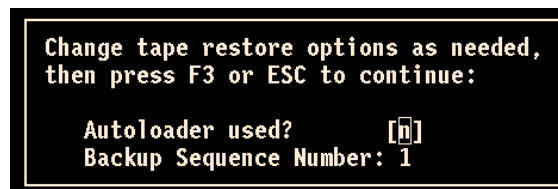
If the backup was created using a [Parallel Virtual Device](#), you must use a parallel virtual device to restore from the backup as well. The virtual devices previously configured on the system are not known when booting in installation mode, so this option provides you a method of defining a parallel virtual device on the local system.

After selecting this option, you are provided a list of local tape drives. You must select at least two drives from the list. To do so, highlight the desired entry and press Enter. An arrow (==>) will appear next to each option selected.

**Note**

**Important:** You must select the same number of devices used to create the backup and you must select them in the same order as they were previously configured

When you have selected the desired devices, press **F3** or **ESC**. The following window will pop up on the screen:



If an [Autoloader](#) is used with the device, select 'y' in the **Autoloader used?** field. If the backup you wish to install from is not the first backup on the media, type the [backup sequence number](#) in the **Backup Sequence Number** field. Refer to the backup sequence number in the backup label if you do not know the correct backup sequence number to use. Also refer to [Virtual Devices](#) for more information on the use of

[sequential autoloaders](#). Once you have selected the desired options, press **F3** or **ESC** to return to the [Change Installation Server or Device menu](#).

## Select Local Sequential Tape Drives

You may also use sequential tape devices to restore from the backup if the backup spans multiple tapes and you want the installation to automatically span the tapes inserted in different devices. This option is identical to the use of a [Sequential Virtual Device](#). The virtual devices previously configured on the system are not known when booting in installation mode, so this option provides you a method of defining sequential devices on the local system.

After selecting this option, you are provided a list of local tape drives. You must select at least two drives from the list. To do so, highlight the desired entry and press Enter. An arrow (==>) will appear next to each option selected.

**NOTE**

Important: You must select the devices in the same order in which they will be read.

When you have selected the desired devices, press **F3** or **ESC**. The following window will pop up on the screen:

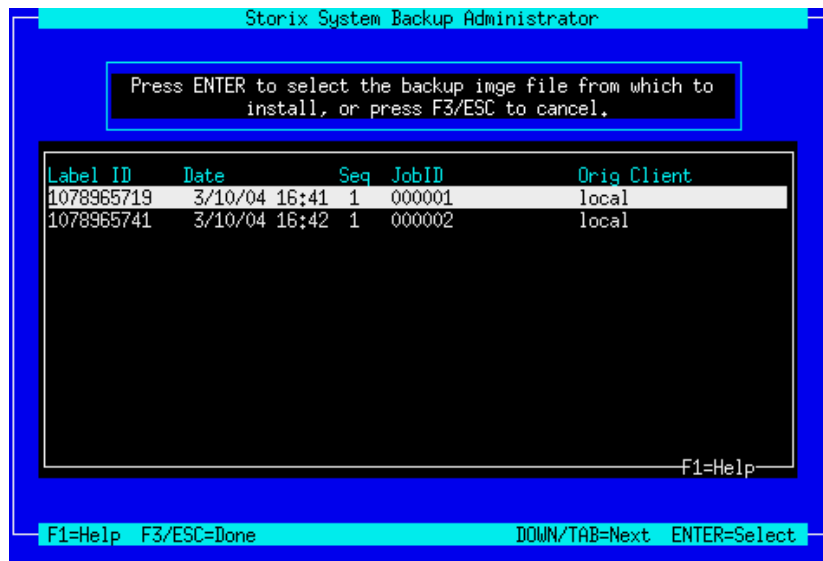
```
Change tape restore options as needed,
then press F3 or ESC to continue:

Autoloader used?      [n]
Backup Sequence Number: 1
```

If an [Autoloader](#) is used with the devices, select 'y' in the **Autoloader used?** field. If the backup you wish to install from is not the first backup on the media, type the [backup sequence number](#) in the **Backup Sequence Number** field. Refer to the [backup sequence number](#) in the backup label if you do not know the correct backup sequence number to use. Also refer to [Virtual Devices](#) for more information on the use of [sequential autoloaders](#). Once you have selected the desired options, press **F3** or **ESC** to return to the [Change Installation Server or Device menu](#).

## Select Local Disk Backup File

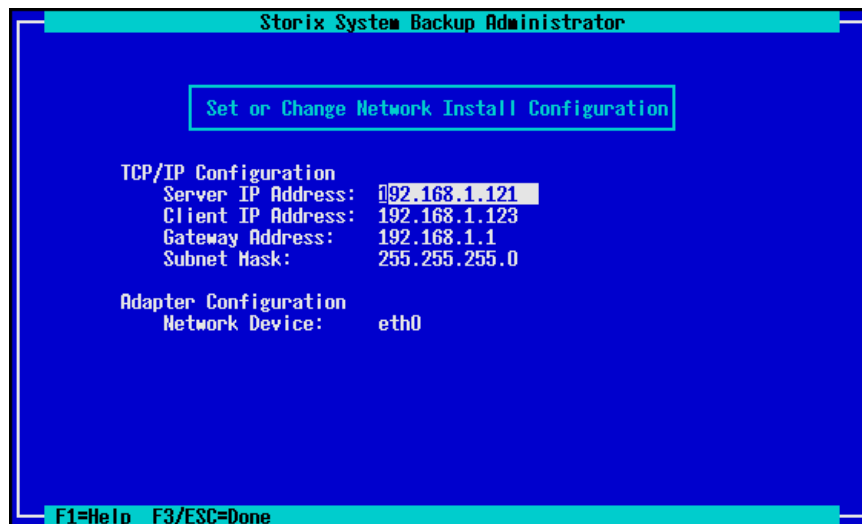
If you configured a locally-attached (or *SAN*-attached) disk for system backup/recovery (refer to [SBAdmin User Guide](#)), and you performed the System Backup to a configured **system backup disk**, you may reinstall the system using that backup. If you select this option, the system will be scanned for one or more system backup disks, and then the disks will be queried for available system backups. If any are found, a screen similar to the following will appear, from which you may select the backup to restore:



Select a backup by highlighting the desired line and pressing **ENTER**, or press **F3** or **ESC** key to cancel the selection. After making your selection, you are returned to the [Change Installation Server or Device menu](#).

## Set or Change Network Configuration

You may set or change the [network install server](#) from which to obtain the backup. The backup itself may be on a tape attached to the server or on the server's disk drive. Upon selecting this option, a screen similar to the following will be displayed:



To use a network install server, the **Server IP Address**, **Client IP Address** and **Network Device** fields must be filled in. If a gateway is required for the client to reach the install server, enter the gateway the client must use in the **Gateway Address** field. Under Adapter Configuration, press **F4** to list the devices available on the system.

Press the **F3** or **ESC** key to end and return to the [Change Installation Server or Device menu](#) once you have finished your selection. When you do so, the network will be configured according to the settings you chose, and the new server will be displayed at the bottom of the screen. If the server has changed, any

previous device selection, if any, will be removed and you will be required to select a new installation device.

## Select Remote Tape Device

If a [network install server](#) is selected and available (indicated by the Server at the bottom of the screen), you may select to install from a backup in a tape drive attached to the remote server. When selecting this option, a list of tape drives on the server will be displayed and you may select a tape drive from the list.

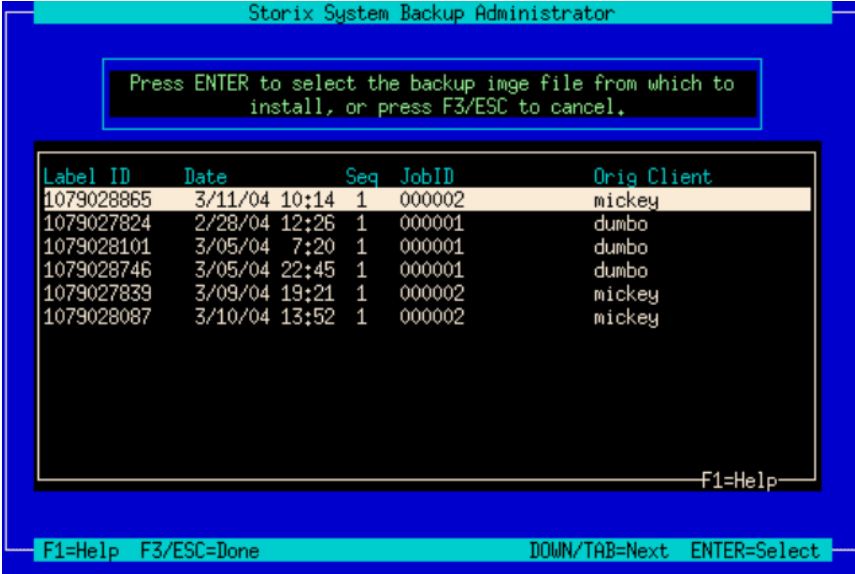
Also, if there is a [parallel or sequential virtual device](#) configured on the server, the virtual devices will be displayed, and you may select one as well. Only select a parallel virtual device if the backup was made using the same parallel device. Refer to the [Virtual Devices](#) chapter for details.

Once you have made your selection, the drive will be checked to ensure that it is available and the name of the device will be displayed at the bottom of the screen, and you will be returned to the [Change Installation Server or Device menu](#).

## Select Remote Disk Backup File

If a [network install server](#) is selected and available (indicated by the **Server** field at the bottom of the screen), you may select to install from a disk file backup available on the server. When selecting this option, a list of backup images on the server will be displayed, and you may select a backup from the list. The list will also display the client from which the backup was originally made, the date and backup job information.

The list will contain any backups that were written to the network install images directory (or directories) defined for the install server. Refer to [Configuring Backup Servers, Devices and Directories](#) for more information on setting the network install images directory.



The screenshot shows the 'Storix System Backup Administrator' window. At the top, a message box says 'Press ENTER to select the backup image file from which to install, or press F3/ESC to cancel.' Below this is a table of backup files. The table has columns for Label ID, Date, Seq, JobID, and Orig Client. The first row is highlighted. At the bottom of the window, there are navigation instructions: 'F1=Help', 'F3/ESC=Done', 'DOWN/TAB=Next', and 'ENTER=Select'.

Label ID	Date	Seq	JobID	Orig Client
1079028865	3/11/04 10:14	1	000002	mickey
1079027824	2/28/04 12:26	1	000001	dumbo
1079028101	3/05/04 7:20	1	000001	dumbo
1079028746	3/05/04 22:45	1	000001	dumbo
1079027839	3/09/04 19:21	1	000002	mickey
1079028087	3/10/04 13:52	1	000002	mickey

If you expect a backup image to appear in the list that does not, it may be that the backup was written with permission for only the original client to read it. If the client to install is not the same as the original client (or the client is installing from a different network adapter and therefore has a different hostname), you must change the backup image to allow clients other than the originating client to read it. Refer to [Change Access Permission of a Disk Backup](#) for details.

Once you have made your selection, the **Backup ID** of the backup file will be displayed in the **Device** field at the bottom of the screen, and you will be returned to the [Change Installation Server or Device menu](#).

Once the installation server and/or device have been selected, press the **F3** or **ESC** key to return to the [Installation and Maintenance Menu](#).

## TSM Configuration

When selecting the [Change Installation Server or Device](#) option from the main menu and TSM support was enabled on the client from which you created the boot media, the **Set Install Device or Server** menu will look a bit different as shown below:

**NOTE**

The following menu assumes you have a *Network Edition* installed with the *TSM Backup Support* feature enabled. If you are using *TSM Edition*, there will be no options available for [LOCAL Installation](#) or [Use SBAdmin Server](#), but you will be taken directly to the [Set or Change TSM Configuration](#) screen which follows.

```
Storix System Backup Administrator for Linux

Set Install Device or Server

NOTE: Select any tape device to change
      the backup sequence number

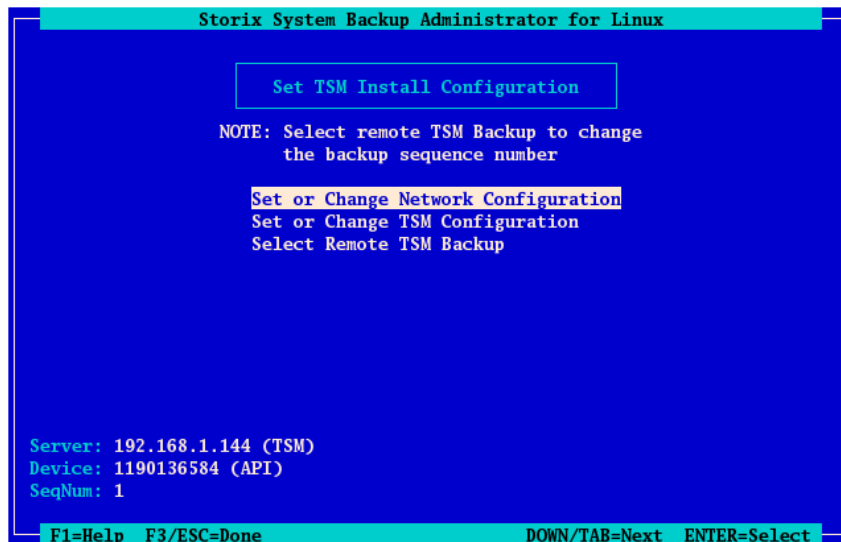
For LOCAL Installation:
  Select Single Tape Drive
  Select Parallel Tape Drives
  Select Sequential Tape Drives
  Select Local Disk Backup File

For NETWORK Installation:
  Use SBAdmin Server
  Use TSM Server

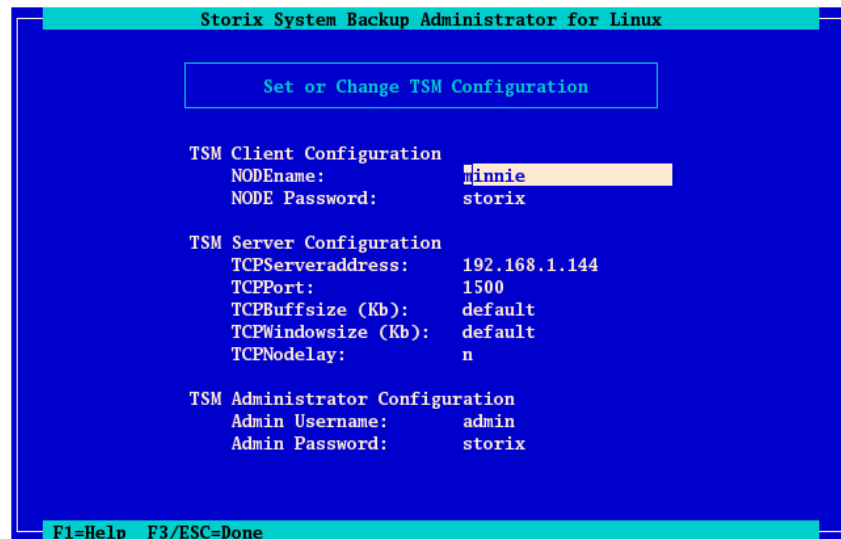
Server: 192.168.1.144 (TSM)
Device: 1190136584 (API)
SeqNum: 1

F1=Help  F3/ESC=Done          DOWN/TAB=Next  ENTER=Select
```

If you wish to install from a TSM server, select [Use TSM Server](#) from the list above. The following screen will appear:



You will need to enter additional information used to contact the TSM server on the screen below:



## TSM Client Configuration

You are required to enter the **NODEName** of the TSM client you are installing. Note that this is not necessarily the same node from which the backup was originally created. If you know the node's password, enter it in the **NODE Password** field. If you do not know the node password, then you will be required to supply the TSM Administrator username and password in the fields below.

Note that, when logging onto the server using the nodename and password, you will have access to backups created by this node, as well as any backups of other nodes for which the backup read permission was set to allow access to any client. If you need access to all client backups on the server, you will need to log on using the administrative username and password as described below.

## TSM Server Configuration

The required field in this section is the **TCPServeraddress**. You must use the TCP address, not the hostname, since host name services are not available when booting from the installation media. The remainder of the fields may typically use the defaults shown. Use the **F1** key to display detailed help information for any screens.

## TSM Administrator Configuration

The TSM administrative user information need only be entered if you do not know the **NODE Password**. Also, by logging onto the server as the administrative user, instead of using the node password, you will have access to all backups on the server, even those for which the permission was set to only allow owner access in the backup profile.

Once you have entered all of the required TSM information, press the **F3** or **ESC** key to return to the previous menu.

## Change the Installation Settings

The sizes, locations and all other attributes for [disks](#), [partitions](#), [slices](#), [SVM \(RAID\) devices](#), [ZFS volumes & filesystems](#), [swap spaces](#) and [filesystems](#) as defined on the backup may be changed using this option. If the backup settings had not been previously read from the backup, the backup will be read and the settings, according to the original system, will be extracted from the backup. The settings will then be verified to ensure they are compatible with the current system's hardware configuration. If the verification fails, you will be required to fix the information to accommodate installation of the backup onto the current system. This may be done either automatically or by changing the setting manually as described in the section [Verify the hardware configuration](#) above.

Upon selection of this option, a set of menus will appear that allow you to customize virtually any attribute of a partition, volume group, logical volume, meta-device or filesystem defined on the backup. You may also choose to exclude certain of these elements from being created or restored, or may select to create them without actually restoring the data. These menus and options are numerous, and are described in detail in the chapter [View/Change Installation Settings](#).

Once you have completed all changes, press the **F3** or **ESC** key to return to the [Installation and Maintenance Menu](#).

## Install the System with Current Settings

When you have completed all steps necessary prior to installing the system, such as changing the installation server, device or volume group information, you may select this option to begin the installation of the system using the current settings.

The backup settings will again be verified to ensure consistency with the current hardware configuration as described in [Verification Process](#). If any problems are found, you will be returned to the [Installation and Maintenance Menu](#).

If no problems were found in the system configuration preventing the installation from proceeding, a confirmation screen will appear, showing you the volume groups and disks that will be created or overwritten by the installation. You will be required to press Enter to continue. A final warning will appear and you must then press "y" to continue the installation or "n" to return to the *Installation and Maintenance Menu*.

Once you have selected to continue, the installation will proceed with no further user input. The partition tables, slices, SVM and ZFS volumes, and filesystems will be created and restored from the backup as defined in the backup information, and as previously customized.

Upon completion of the installation, with the exception of any changes made within the installation menus, the new system will look identical to that of the original system from which the backup was made.

More details on the complete installation process are found in the [Install the System](#) chapter below.

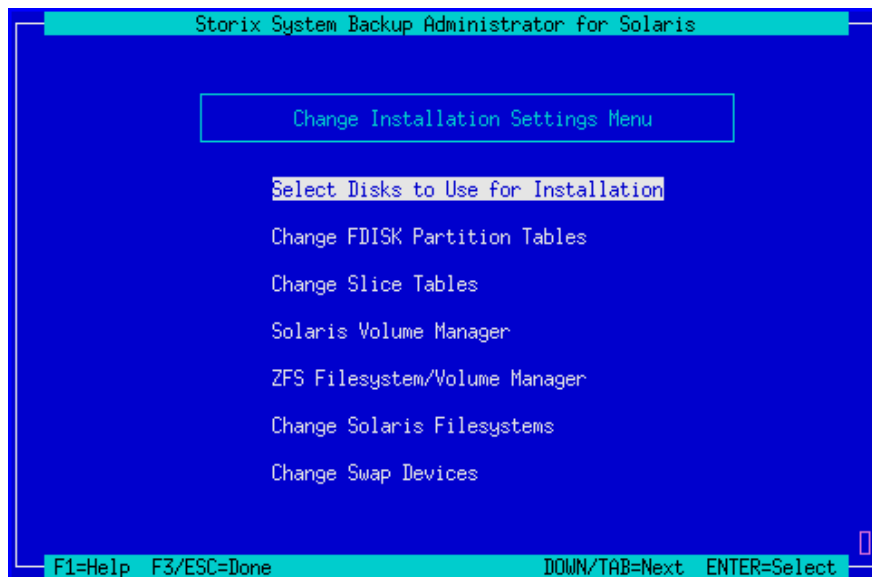
# 6. View/Change Installation Settings

From the **Main Menu**, select **View/Change Installation Settings**. The first time you enter this option, the backup information will be read from the installation media and compared with the system and disk configuration to ensure there is adequate space on the available disks to perform the installation. Checks will also be made to ensure you booted from boot media that supports all of the devices you will be restoring from the backup. If there are any inconsistencies, you will be required to make changes within these menus to correct the problem.

**NOTE**

It is important to note that any options or changes made in these selections have **NO AFFECT** on the actual disks or their contents until **AFTER** you begin the installation. If you change your mind at any time, you can cancel or change information without worry as to the state of the data on the disks!

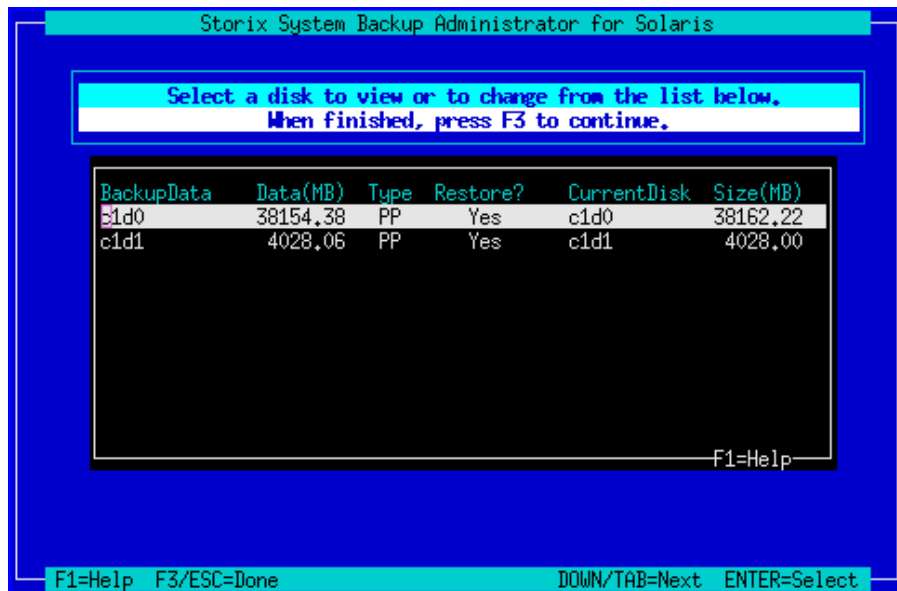
The following is the **Change Installation Settings Menu**:



At times, you may be required to make changes throughout these menus to correct problems that would prevent the devices from being created or the data from being restored. Only after returning to the [Main Menu](#) by pressing **F3** or **ESC**, and selecting to begin the installation, will the data be checked again for consistency and additional changes be required.

## Select Disks to Use for Installation

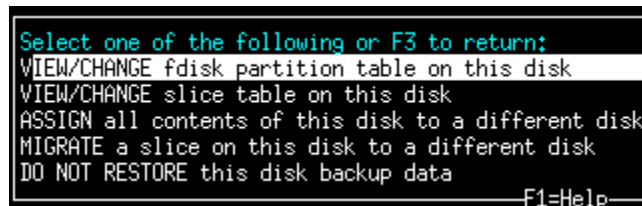
If the disks detected on the system do not exactly match those described on the backup, this option will appear automatically. Otherwise, you can select this option from the [Settings Menu](#) to display a screen similar to the following. We will refer to this as the **Disk Table Menu**.



Many options are available from this screen for moving data between disks. This is necessary when the disks currently available don't match those defined on the backup, or if you simply want to reorganize the data on the disks for better performance, or to implement SVM or ZFS mirroring or striping.

To return to the [Settings Menu](#), press **F3** or **ESC**. The backup data will again be checked to ensure you have enough room on the disks for the slices or other data as you have defined them. If not, you will be warned, but can make changes in this or other settings to fix the problem before the installation is actually performed.

The above screen shows you the original disk the data resided on and the new disk that is assigned that data. There may be previous disks that are not assigned to a new disk, or even additional detected disks that have no data currently assigned to them. By selecting one of the lines on the screen, you are provided several options as shown below:



Note that the options for displaying or migrating partitions only appear if the selected disk was previously partitioned or you have chosen to create partitions on it. Each option is described below:

## VIEW/CHANGE FDISK Partition Table

This option will appear only if the selected disk is empty or currently contains a partition table (Intel x86-based systems). This provides the ability to change the partition table for the selected disk by adding, deleting or resizing partitions. Instructions are same as when selecting [Change FDISK Partition Tables](#) from the [Installation Settings Menu](#).

## VIEW/CHANGE Slice Table

This provides the ability to change the slice table for the selected disk by adding, deleting or resizing slices on the disk. Instructions are same as when selecting [Change Slice Tables](#) from the [Installation Settings Menu](#).

## ASSIGN all contents of this disk to a Different Disk

If you select this option, you will be provided a list of available (unused) disks. If you select a new disk from the list, any partitions, slices or their contents (i.e. filesystems, ZFS or SVM volumes) will be moved to the new disk. The corresponding partition, slice and disk names in any configuration files will reflect the change.

## MIGRATE a slice on this disk to a different disk

If you select this option, the [slice table](#) will be displayed where you can select a slice to be moved to a different disk. You will then be prompted for the location on the new disk to place the slice. If the slice contained filesystem data or was used by another SVM or ZFS device, all other system information will be updated to reflect the new slice name.

## DO NOT RESTORE this backup data

By selecting this option, you are choosing not to restore the data that is assigned to the selected disk. By doing so, all previous contents will become undefined, and the disk will not be used when installing the system. Any data that actually resides on the disk at this time will not be overwritten.

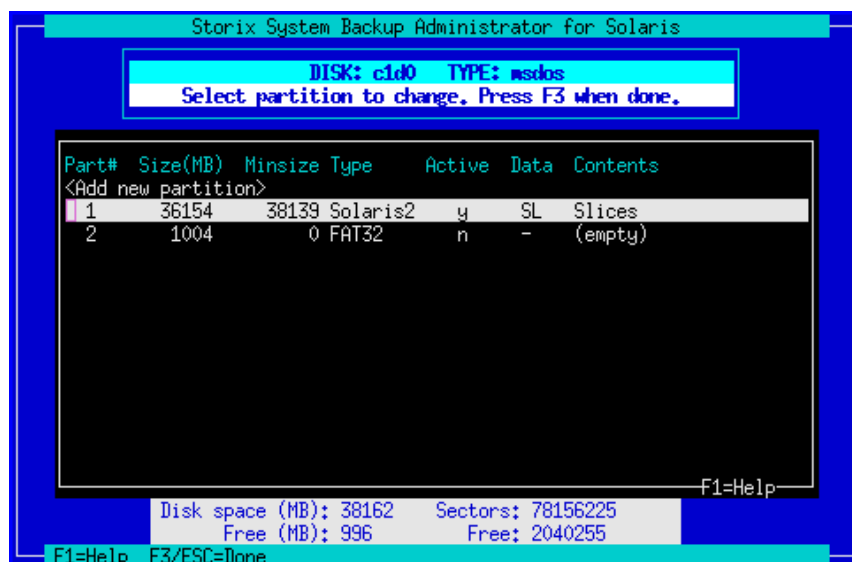
If you choose not to restore a disk containing partitions or slices, the partitions and slices will be deleted as well as any contents of those partitions or slices, whether they are filesystems, SVM or ZFS volumes. If selecting not to restore a disk's contents causes any problems which would prevent the installation from being performed, you will be informed so and required to make additional changes before continuing the installation.

When you have finished all changes, press **F3** or **ESC** to return to [Select Disks to Use for Installation](#) and **F3** or **ESC** again to return to the [Settings Menu](#).

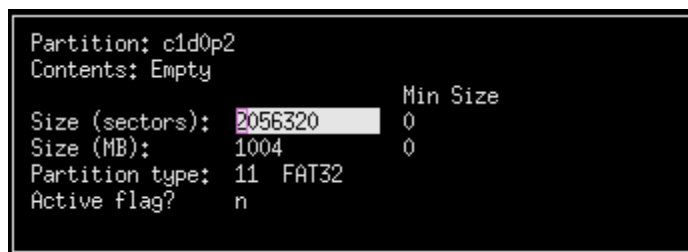
## Change FDISK Partition Tables

This option on the menu is really just a shortcut into the same options available when selecting disks to use for installation. You have the same options of changing partition information or adding new partitions to a disk, but must use the [Select Disks to Use for Installation](#) option to move partitions or other data between disks.

If there is more than one disk on the system, you will be asked to select a disk from the list. After doing so, a screen similar to the following will appear:



You may select to add a new partition by pressing **Enter** at the highlighted line at the top, or move the highlighted line over the partition you wish to change. When adding a new partition you will be prompted where to insert the partition within the table. If you select a line containing an existing partition, you are first asked if you wish to either **CHANGE PARTITION INFORMATION** or **REMOVE THIS PARTITION**. If you want to remove the partition from the disk, select the REMOVE option. Otherwise, when selecting to CHANGE, a window similar to the following will be displayed:



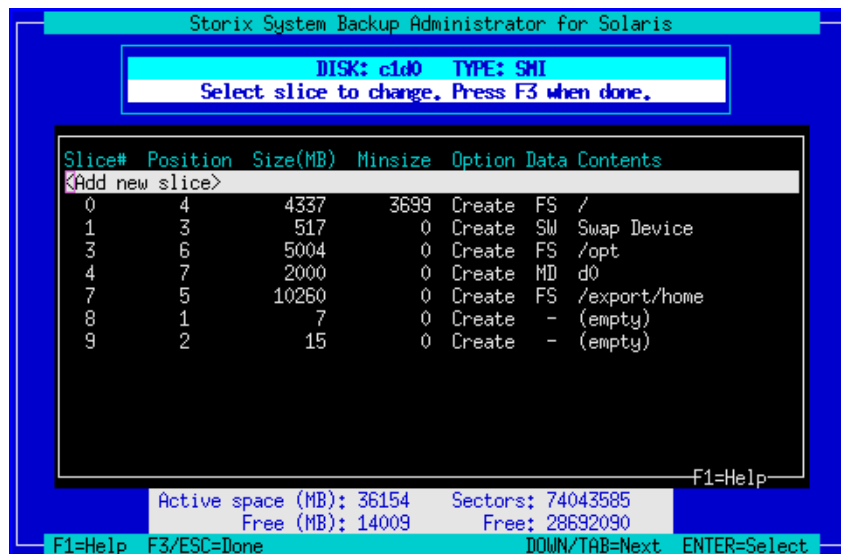
You may change any of the options shown. The **Size** of the partition can be set by either entering the number of sectors (512-bytes each) or by entering the number of megabytes. In either case, the other will be adjusted accordingly. You normally will not need to change the **Partition type** or **Active flag**, which usually have no effect. However, if this is a system requiring a */boot filesystem* you should not change these settings, since the system *firmware* looks for boot partitions of this type.

When finished with your selections, press F3 or ESC to return to the [Change Partition Table](#) options.

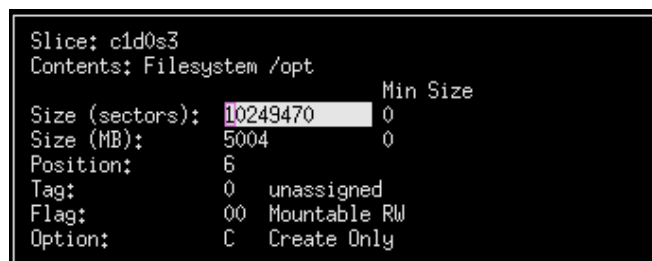
## Change Slice Tables

This option on the menu is really just a shortcut into the same options available when selecting disks to use for installation. You have the same options of changing slice information or adding new slices to a disk, but must use the [Select Disks to Use for Installation](#) option to move slices or other data between disks.

If there is more than one disk on the system, you will be asked to select a disk from the list. After doing so, a screen similar to the following will appear:



You may select to add a new slice by pressing **Enter** at the highlighted line at the top, or move the highlighted line over the slice you wish to change. When adding a new slice you will be prompted where to insert the slice within the table. If you select a line containing an existing slice, you are first asked if you wish to either **CHANGE SLICE INFORMATION** or **REMOVE THIS SLICE**. If you want to remove the partition from the disk, select the REMOVE option. Otherwise, when selecting to CHANGE, a window similar to the following will be displayed:



You may change any of the options shown. The **Size** of the slice can be set by either entering the number of sectors (512-bytes each) or by entering the number of megabytes. In either case, the other will be adjusted accordingly.

- **Position:** This option indicates the position on the disk that this slice will be created. Solaris slices are numbered from 0 to 15, with certain reserved slice numbers, based on the operating system version and platform type. The first slice on the disk (position 1) may, for example, be used by slice 5. Changing this option allows you to simply move slices from one part of the disk to another. If you change this to a number which is already in use, the slices at the selected position and all that follow will be moved after this slice.
- **Option:** This is either **Create Only**, indicating that the disk will be created but no *raw* backup data is restored to it, **Create/Restore** indicating that the previous raw slice data included on the backup should be restored, or **Delete** to delete this slice. The option to **Create/Restore** will only appear if you included raw slice data on your system backup and raw data (i.e. non-filesystem, ZVM or ZFS) from this slice was included.

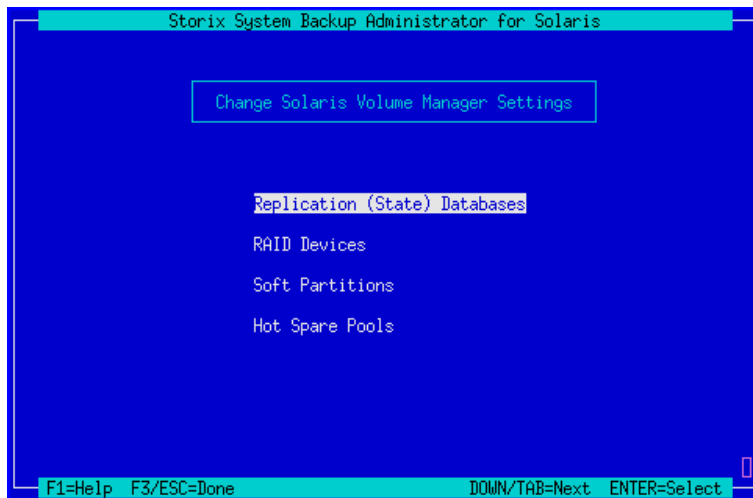
When finished with your selections, press F3 or ESC to return to the [Change Slice Table](#) options.

# Solaris Volume Manager

The **Solaris Volume Manager (SVM)** provides the flexibility of logically managing multiple physical disks as one or more logical disk, called **meta-devices** (also referred to as *meta-disks*, *MD devices*, and *multi-disks*). This allows, for instance, a filesystem to be spread sequentially across multiple disks, striped across disks. Therefore, a filesystem created on a meta-device does not have to use contiguous segments of disk space. Therefore, you can expand and reduce the size of these containers even if there is not contiguous disk space available. Since SVM support in SBAAdmin is quite extensive, we'll provide a quick lesson in SVM terminology, but you should refer to your SVM documentation for details:

- **Meta-device:** This is the common term for devices created using SVM. A meta-device is a device name starting with a “d” and followed by a number from 0 to 128 (i.e. “d0”). The meta-device will be created using one or more *disk slices* or other meta-devices.
- **Striped (RAID 0):** A striped meta-device writes data to one or more disk stripes or *soft partitions* (see below). If only one stripe is used, the meta-device does not differ from its underlying device. Striping spans the data in small chunks between the underlying disk stripes or soft partitions, providing better performance by utilizing multiple physical devices to concurrently read and write data.
- **Mirrored (RAID 1):** A mirrored meta-device is comprised of 2 or more other meta-devices, typically striped or *soft partitions*. By mirroring data, a copy of all data is placed on each of the underlying devices, thereby protecting data from a failure of an underlying device. The actual writable space is equal to the size of the smallest underlying device divided by the number of devices.
- **Parity (RAID 5):** This type of meta-device is made up of 3 or more *disk slices* or other *soft-partitions* (see below). Data is written to all but one of the devices, and the remaining device writes a parity bit which aids in recovery if data after a failure of any one of the underlying devices. The actual writable space is equal to the size of the smallest underlying device minus one.
- **Soft Partitions:** This is a type of meta-device created using part of a *disk slice* or other meta-device. Multiple soft-partitions can share the same devices, therefore creating smaller partitions that share the same larger device and can be easily, added, removed and resized.
- **Replication Database (or State Database):** Every meta-device requires this database, describing the meta-device itself. This database can exist in a *disk slice* of its own, or can share a disk slice with the meta-device itself. More than one copy (or *replica*) of this database can exist on the same device, but it's usually a good idea to defined more than one replication database using different physical devices in case of a disk failure.
- **Hot Spare Pool:** A hot spare is one or *more disk slice* that is placed in a “pool”. Slices from this pool are added to a meta-device automatically if one of the devices that make up the meta-device fails. A hot spare pool may be assigned to one or more meta-devices for this purpose.

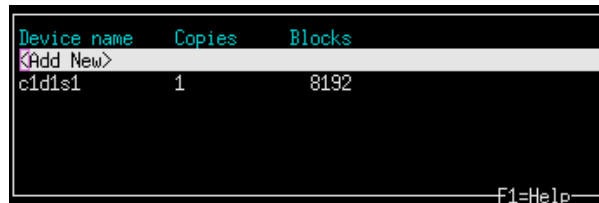
When selecting **Solaris Volume Manager** from the menu, you will be provided another list of options:



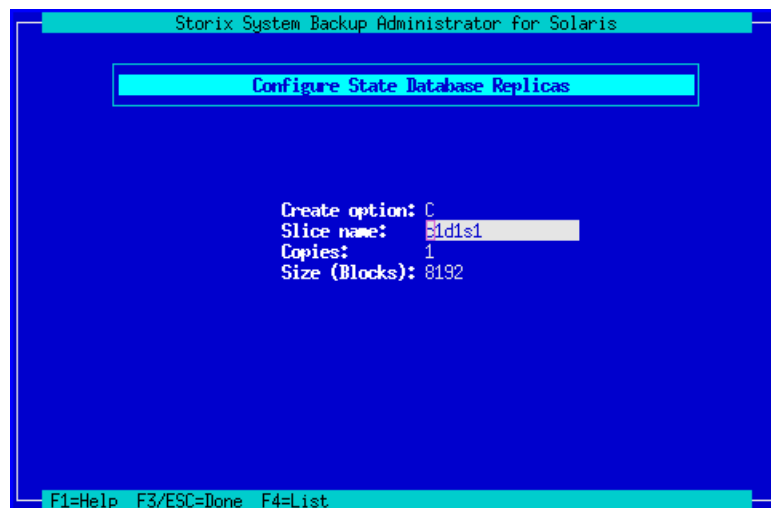
You will note that these options may be used not only to change existing SVM configuration, but also for creating new meta-devices, which in turn can contain new or migrated filesystems.

## Replication (State) Databases

Use this option to assign one or more databases to a *disk slice*. When selecting the option, you can select an existing database to edit or remove, or add a new database:



Select **Add New** to create a new database, or use the arrow keys to select a line containing an existing database and press **Enter**. A screen similar to the following will be displayed:



If you want to remove this database, move the cursor to the **Create option** field and press "D". Otherwise, you can usually accept the default settings by simply pressing **ESC** to return to the [SVM Settings Menu](#), or press **F1** for help on any entry field.

## RAID Devices

When selecting this menu option, you are provided a list of existing RAID meta-devices and an option to add a new meta-device:

RAID-Dev	Type	Size (MB)	Contents
<Add New>			
d0	RAID0	6048	MD:d1
d1	RAID1	4000	/userdata

F1=Help

Select **Add New** to create a new RAID meta-device, or use the arrow keys to select a line containing an existing device and press **Enter**. If creating a new meta-device, a new record is created with default settings, including setting the type to RAID 0. You can change the RAID type by selecting either **RAID 1** (mirrored) or **RAID 5** (parity) in the **RAID Type** field on the screen. The following is an example of each RAID type:

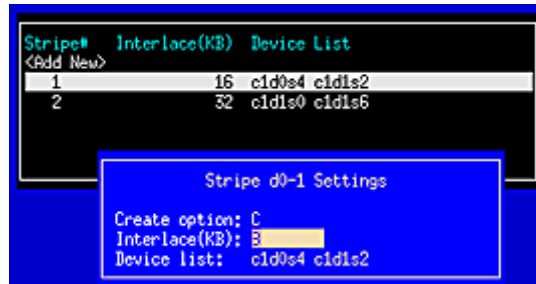
- **RAID 0 (striped)**: This is the default when creating a new RAID meta-device. When creating a new device, selecting an existing RAID 0 device, or when changing the RAID type of a previous RAID device, a screen similar to the following will appear:

You must define at least one stripe for a RAID 0 device. To do so, move to the **# of Stripes** field and press **F4**. This will produce a list of stripes and/or an option to add a new stripe:

Stripe#	Interlace(KB)	Device List
<Add New>		
1	16	c1d0s4 c1d1s2
2	32	c1d1s0 c1d1s6

F1=Help

After making a selection from the list, an additional window will appear, allowing you to change the settings for the selected stripe:

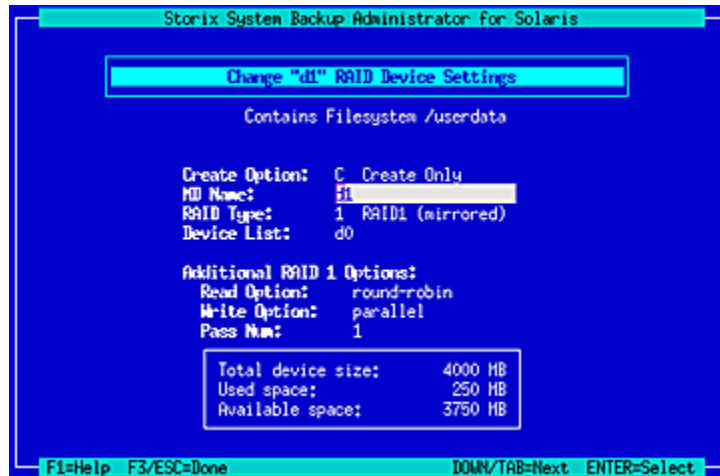


From this window, you must select the device or devices (stripes or other meta-devices) that make up this stripe. To do so, move to the **Device list** field and press **F4** to select or de-select from a list of existing devices. To delete the stripe, move to the **Create option** field and press "**D**". When finished, press **F3** or **ESC** to return to the [RAID Device Settings](#).

**Hot Spare Pool:** You can press **F4** in this field to list and select an available hot spare pool. This pool is a separate SVM device which must already exist, and may be created using the [Hot Spare Pools](#) option described below. Note that hot spare pools are only applicable to RAID 0 devices that are assigned to mirrored (RAID 1) devices.

When all selections are complete, Press **F3** or **ESC** to return the [SVM Settings Menu](#).

- **RAID 1 (mirrored)** : When selecting a RAID 1 device, or changing the RAID type of a previous device, the following options will appear:



A RAID 1 meta-device can only be built using other (typically RAID 0) meta-devices. Therefore, if you have not already done so, you must create at least one RAID 0 device first. To select the RAID 1 device on which to create this mirror, press **F4** in the **Device List** field. Only RAID 1 meta-devices which already exist will be provided in the selection list.

The additional options may be set to the default values shown. Otherwise, you can change the additional options by moving to the desired entry field and pressing **F4**, or press **F1** for additional information.

When all entries are complete, press **ESC** or **F3** to return to the [SVM Settings Menu](#).

- **RAID 5 (parity) :**

When changing the RAID Type to RAID 5, or when selecting an existing RAID 5 device, a screen similar to the following will appear:



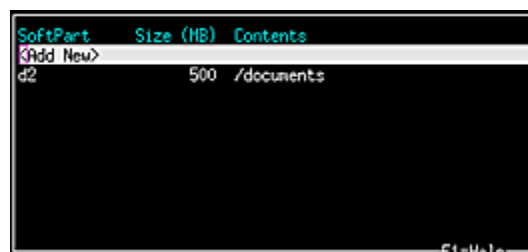
Raid 5 meta-devices are configured using *disk slices* or *soft partitions*. You will need a minimum of 3 underlying devices to make a RAID 5 meta-device. To select the devices to include, move to the **Device List** field and press **F4** to select. Only defined disk slices and soft partitions will appear. You must select at least 3 devices. If you do not have enough devices, press **ESC** to return the settings screen above, then type "D" in the **Create option** field to delete this meta-device.

**Hot Spare Pool:** You can press **F4** in this field to list and select an available hot spare pool. This pool is a separate SVM device which must already exist, and may be created using the [Hot Spare Pools](#) option described below.

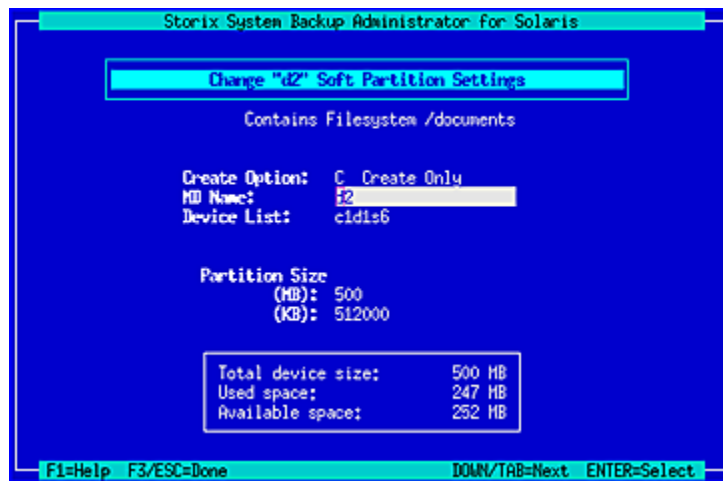
The additional options may be set to the default values shown. Otherwise, you can change the additional options by moving to the desired entry field and pressing **F4**, or press **F1** for additional information.

- **Soft Partitions:** A soft partition is a meta-device that sits on a single *disk slice* or other meta-device. The difference between the soft partition and other devices is that a soft partition has a fixed size, and multiple soft partitions can share the same underlying device. Therefore, if you have a disk slice or a RAID 0 device that is 6 GB in size, you can create 6 soft partitions, each 1 GB in size, using the same device.

After selecting this option, you are given a list of existing soft partitions and an option to add a new device:



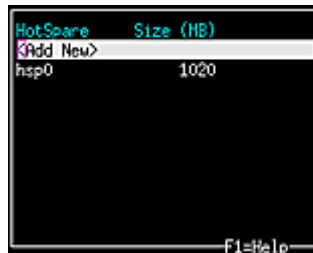
Select **Add New** to create a new soft partition, or use the arrow keys to select a line containing an existing soft partition and press **Enter**. A screen similar to the following will be displayed:



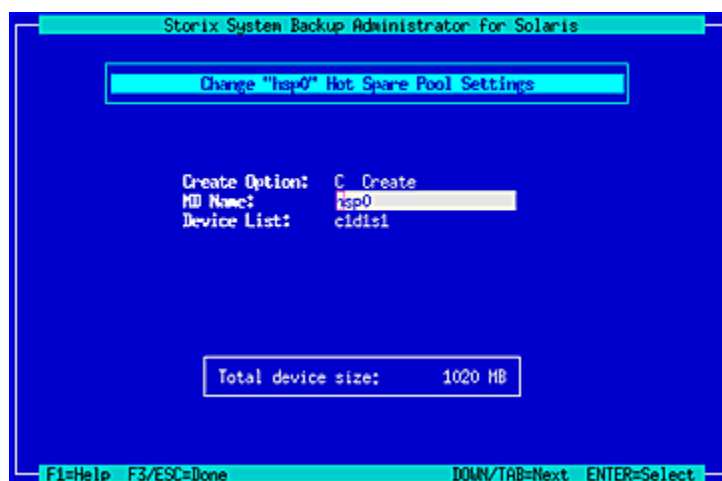
- Hot Spare Pools:** This type of meta-device contains one or more *disk slices* which are used as spare parts for other RAID 0 or RAID 5 meta-devices. If a disk fails which contains redundant (mirrored or parity) data, the hot spare will automatically take over for the failed disk, and will be automatically resyncd with the missing data.

Note that only RAID 0 devices which are part of a RAID 1 (mirrored) meta-device will benefit from having a hot spare assigned, since only then is there redundant data.

When selecting this option, you are given a list of existing hot spares and an option to add a new one:



If you select Add New, a new device will be created with a new name. The name will always start with "hsp", followed by a number. When adding a new device or selecting an existing device, the following screen will appear:



Move to the **Device List** field and press **F4** to list and select the *slice* or slices to add to the meta-device. To remove the hot spare pool, move to the **Create Option** field and press “**D**”. When doing so, the hot spare will be automatically removed from any other meta-device records it is assigned to.

When complete, press **F3** or **ESC** to return to the [SVM Settings Menu](#).

## Understanding RAID 0+1



This information is provided to help you understand the association between RAID 0 and RAID 1 devices in a meta-device, and the hot spare pools used to recover from disk failures. We provide this information in case you choose to use the Storix recovery process to reconfigure your storage for higher performance and availability.

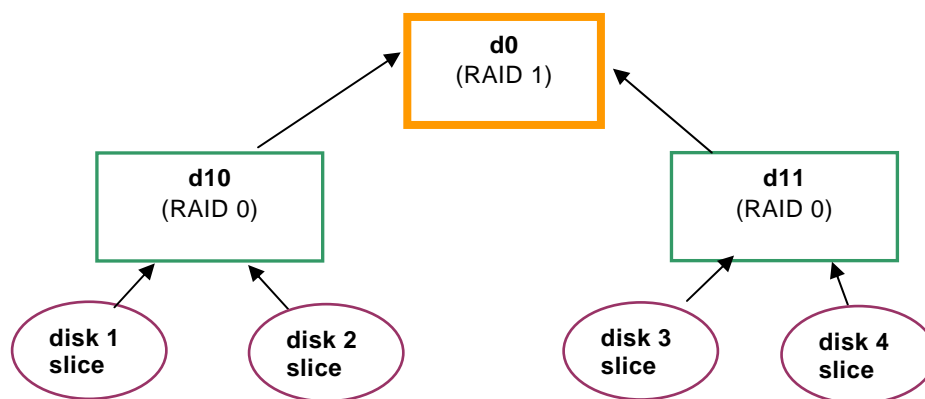
A RAID 0+1 device configuration is a set of striped disks that are mirrored onto another set of striped disks. In other words, striped mirrors. Since mirroring usually causes I/O performance degradation, this design is typically used to get normal disk I/O performance while still having mirrored (redundant) data. A RAID 1 (mirrored) meta-device can only be created on RAID 0 (striped) meta-devices.

If the mirror contains only one RAID 0 device, then no mirroring is actually taking place (nothing to mirror to). If you assign more than one RAID 0 to a mirror, then the data will be replicated onto each RAID 0.

Likewise, if a RAID 0 device has only one underlying device (*disk slice* or *soft partition*), then no actual striping is taking place. SVM still allows you to create a RAID 0 with a single device, since only then can you mirror the data. You still end up with a mirrored configuration, but with no underlying striping.

For a RAID 0+1 configuration, you need to have at least 2 stripes, each of which contain at least 2 underlying devices. Then, you create a mirrored meta-device from the 2 stripes.

Here’s an example:



Devices **d10** and **d11** are RAID 0 meta-devices, each made from two different *disk slices* (on different disks). Mirrored meta-device **d0** is then created from **d10** and **d11**. Any data written to **d0** will be mirrored onto the striped meta-devices, which in turn will each stripe the data onto 2 slices. You can create a filesystem on device **d0**, and know that the data will be both striped and mirrored, providing both performance and redundancy.

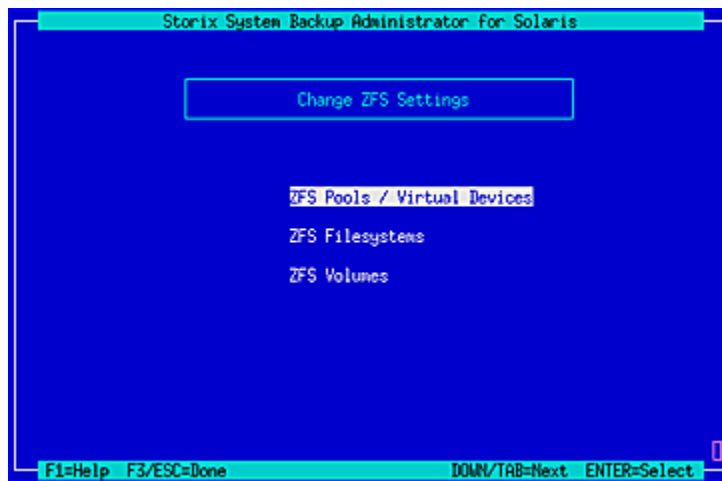
Now that this is done, it's a good idea to also create a [hot spare pool](#). This hot spare pool will typically consist of a slice from an additional disk. For example, you can have a single hot spare device called "**hsp001**", which is assigned to both of the RAID 0 devices. Then, if any disk fails within either RAID 0 device, this hot spare slice will automatically fill-in, and will be automatically synced up with the data from the other mirror.

## ZFS Filesystem/Volume Manager

The **Zettabyte File System** is an advanced filesystem for Solaris that includes volume management. ZFS's ease-of-use, simplified administration and dynamic growth are quickly increasing its popularity. ZFS is available in Solaris 10 (6/06) and later. SBAdmin supports all aspects of ZFS filesystems and volumes, and the ability to migrate older slice-based filesystems to ZFS. The following is some terminology that will be used in this chapter:

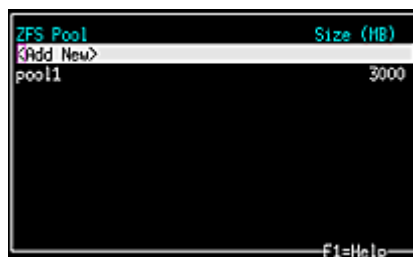
- **ZFS Pool (Zpool):** Underlying devices (currently only *disk slices* are supported) are combined into a single "pool", from which ZFS virtual devices (see below) are created. A pool can then be split into multiple ZFS filesystems and raw volumes.
- **Virtual Devices:** The zpool is comprised of one or more virtual devices, each of which is comprised of one or more disk slices. The virtual devices, containing multiple disk slices, can use striping (RAID 0), mirroring (RAID 1), or raidz (RAID 5/6). Virtual devices can be added to a zpool at any time, extending its storage capacity.
- **Datasets:** A dataset is either a ZFS filesystem or a ZFS volume. While a volume has a fixed size, the filesystem will grow and shrink dynamically depending on its contents. It is possible to place limitations, or quotas on the amount of space a filesystem can take, and you can also set a reserved size to ensure that there is always at least that amount of space available in the zpool allocated to a particular filesystem. You can place another filesystem type (i.e. **UFS**) in a volume, but a ZFS filesystem is a unique filesystem with nearly unlimited growth and extremely high performance.

When you select **ZFS Filesystem/Volume Manager** from the [Installation Settings Menu](#), the following options will appear, which are each described below:

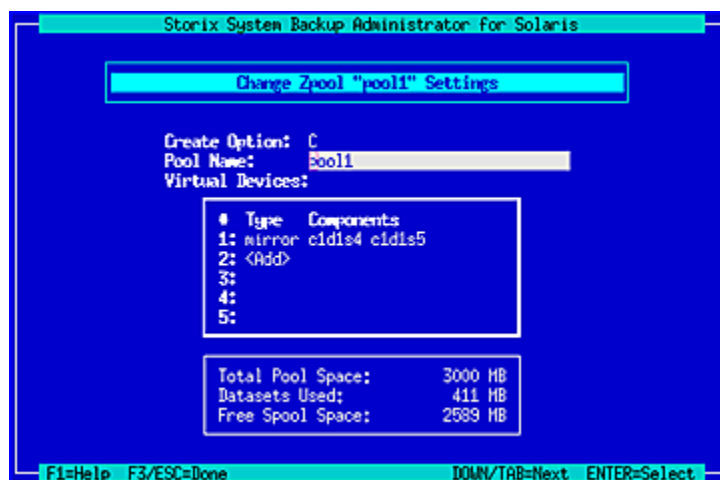


## ZFS Pools

The first item on the menu is used to create a zpool and its underlying virtual devices. This section describes editing zpools. Refer to the following section for *virtual devices*. When selecting this option, you are given a list of existing zpools and an option to create a new one:



If you select **Add New**, a new zpool name will be generated for you. When creating a new zpool or selecting an existing zpool, you are taken to the following options screen:



From here, you can change the **Pool Name** (and all *datasets* and *virtual devices* within the pool will be changed as well). If you want to delete the zpool, move to the **Create Option** field and press “D”. To add, change or delete virtual devices, use the *down-arrow* to move to a virtual device line (1-5) and press **Enter**

or **F4** to list and change the attributes. Note that you can only add virtual devices in order, and if a virtual device is deleted, the remaining virtual devices will be moved up in the list as needed. You can only move to a line containing existing virtual device information or the next sequential line to add a new virtual device.

Changing the virtual device settings is described in the next section. If you are finished with the zpool selections, pres **ESC** or **F3** to return to the [ZFS settings menu](#).

## Virtual Devices

After you have selected the zpool you want to change, you can add, change or delete virtual devices. The virtual device will be comprised of one or more *disk slices*, and may be utilized in a mirrored, striped or parity disk configuration for higher performance and/or availability. When selecting a virtual device to add or change, a window similar to the following will appear:



If you want to delete this virtual device, enter a “D” in the **Create Option** field. You can select from one of the following RAID types by pressing F4 at the **RAID Type** field:

- **stripe**: This is the default virtual device type or **RAID 0**: Data will be striped across all devices selected in the **Device List** field. You must add one or more devices to this virtual device. If only one device is selected, no striping will occur.
- **mirror**: Data will be mirrored (**RAID 1**), or copied, across the devices in the **Device List** field. This option requires at least 2 devices be selected for mirroring to have affect.
- **raidz1**: This is a **RAID 5**: (single parity) configuration, and requires at least 3 devices be selected in the **Device List** field.
- **raidz2**: This is a **RAID 6**: (double parity) configuration, and requires at least 3 devices be selected in the **Device List** field.
- **spare**: The disks selected in the **Device List** field will not have data written to them but will be held for use in case of a failure of another disk in the pool. If a disk failure occurs on a mirrored or parity configuration, one of these disks will automatically replace it and be synced with the most recent data.

Select or de-select one or more devices for the virtual device by pressing **F4** at the **Device List** field. When all selections are complete, press **F3** or **ESC** to return to the [Zpool Settings](#) screen.

## ZFS Filesystems

After you have created at last one *zpool*, you can add any number of ZFS filesystems to it. Note that ZFS filesystems are special filesystems contained only in zpools, not to be confused with other [Solaris Filesystems](#). When selecting **ZFS Filesystems** from the [ZFS Settings Menu](#), you are given a list of existing ZFS filesystems and an option to add a new one:

ZFS Filesystem	MinSize(MB)	MountPoint
pool1	100	/pool1
pool1/data1	15	/pool1/data1
pool1/data1/stuff	10	/pool1/data1/stuff
pool1/fs1	0	/pool1/fs1
pool1/fs1/data1	50	/pool1/fs1/data1
pool1/fs1/data2	0	/pool1/fs1/data2
pool1/fs2	0	/pool1/fs2
pool1/fs2/data1	100	/pool1/fs2/data1
pool1/fs2/data2	65	/pool1/fs2/data2

When adding a new filesystem, a default *mount point* and *dataset name* will be created for you. After selecting to add a new ZFS filesystem or to edit an existing one, the following options screen will appear:

```

Storix System Backup Administrator for Solaris

Change Zpool filesystem "pool1/fs2/data2" Settings

Create Option: C
Pool Name: pool1
Dataset Name: fs2/data2

Mount Point: /pool1/fs2/data2
Quota: 0 MB
Reservation: 0 MB
Record Size: 131072 Bytes

Filesystem Data size: 65 MB

Total Pool Space: 3000 MB
Datasets Used: 411 MB
Free Spool Space: 2589 MB

F1=Help F3/ESC=Done F4=List

```

Each option can be explained by pressing the **Help (F1)** key at any entry field. Note the following:

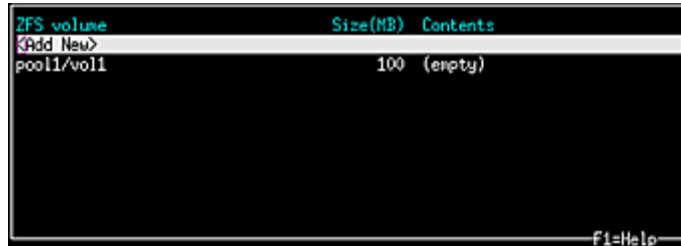
- **Pool Name:** You can press **F4** at this field to list the existing zpools and select a different zpool. Doing so will move this dataset and any child datasets (i.e. "data2/fs2/stuff" could be a child of "data2/fs2") to the newly selected zpool. The filesystem mount point will also be changed to reflect the new zpool name unless it was altered previously.
- **Dataset Name:** This name will be appended to the pool name to create a *mount point* unless the mount point has been altered before. You can change the dataset name, but the parent of the dataset name you choose must also exist. For example, you cannot have a dataset name "**fs2/data2**" unless the dataset name "**fs2**" also exists in the zpool "**pool1**".
- **Mount Point:** This is automatically generated for new zpools based on the zpool and dataset name. If you change the pool name or the dataset name, the mount point will be changed also, but only if it was not altered previously.
- **Reservation:** This size applies to this dataset and any child datasets (i.e. "data2/fs2/stuff" could be a child of "data2/fs2"). This is reserved space in the pool that cannot be used by other datasets. The filesystem is not pre-allocated to this size, but is ensured at least this much space for future growth. Changing this number will reduce the amount of free space within the zpool for other datasets.

When all selections are complete, press **F3** or **ESC** to return to the list of filesystems, and **ESC** or **F3** again to return to the [ZFS Settings Menu](#).

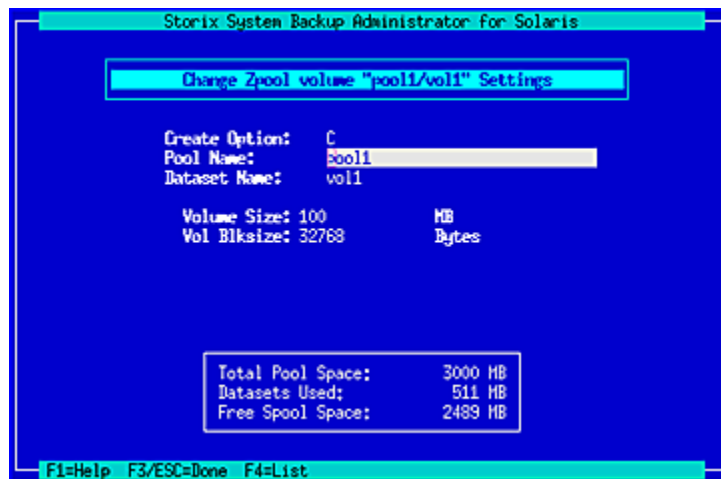
## ZFS Volumes

A ZFS volume has a fixed size (but may be increased) and does not contain a ZFS filesystem. It may contain any type of data, including other [Solaris Filesystems](#).

After you have created at last one *zpool*, you can add any number of ZFS volumes to it. When selecting **ZFS Volumes** from the [ZFS Settings Menu](#), you are given a list of existing ZFS volumes and an option to add a new one:



When adding a new volume, a new *dataset name* will be created for you. After selecting to add a new ZFS volume or to edit an existing one, the following options screen will appear:



Each option can be explained by pressing the **Help (F1)** key at any entry field. Note the following:

- **Pool Name:** You can press **F4** at this field to list the existing zpools and select a different zpool. Doing so will move this *dataset* and any child datasets (i.e. "**data2/fs2/stuff**" could be a child of "**data2/fs2**") to the newly selected zpool.
- **Dataset name:** You can change the dataset name, but the parent of the dataset name you choose must also exist. For example, you cannot have a dataset name "**vol1/data**" unless the dataset name "**vol1**" also exists in the zpool "**pool1**".
- **Volume Size:** A non-zero entry is required in this field. This will be the size of the volume, and the total space available in the zpool will be reduced by this value.

When all selections are complete, press **F3** or **ESC** to return to the list of volumes, and **ESC** or **F3** again to return to the [ZFS Settings Menu](#).

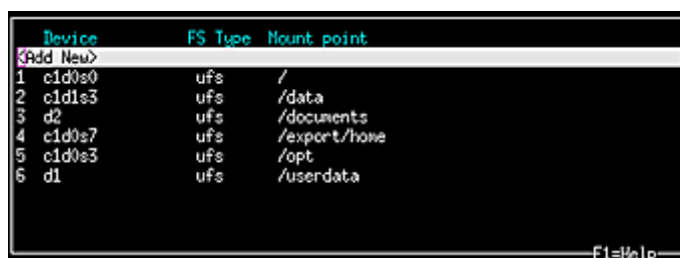
# Change Solaris Filesystems

This option may be used to change any of the settings for the Solaris filesystems, which vary depending on the filesystem type. SBAAdmin Backup Administrator supports the following filesystem types:

- ufs**            Universal File System (Solaris default)
- udfs**          Universal Disk Format File System
- pcfs**          PC Filesystem (DOS/VFAT)
- zfs**            Zettabyte File System (refer to [ZFS Filesystems](#))

Virtually any of the attributes which are available for the filesystems above can be set or changed from the SBAAdmin installation menus. When you select this option you will receive a list of filesystems currently defined:

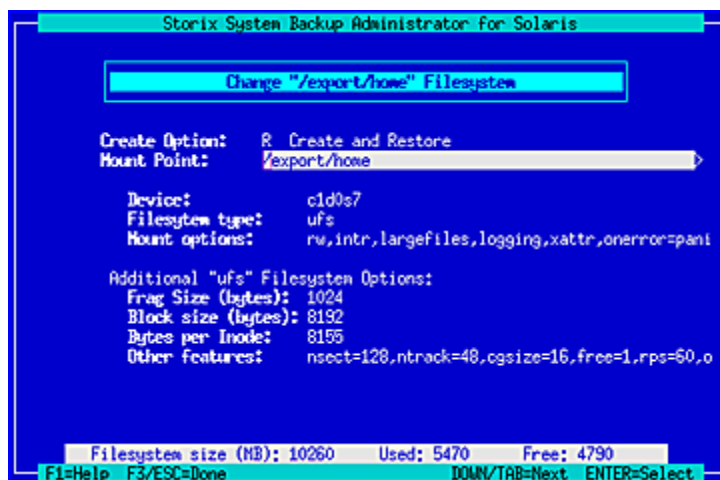
**NOTE** *ZFS filesystems do not appear in this list, and are not covered in this section. Refer to the [ZFS Filesystems](#) section for additional information.*



	Device	FS Type	Mount point
3Add New>			
1	cd0s0	ufs	/
2	cd1s3	ufs	/data
3	d2	ufs	/documents
4	cd0s7	ufs	/export/home
5	cd0s3	ufs	/opt
6	d1	ufs	/userdata

Select **Add New** to create a new filesystem or select an existing filesystem from the list. If you select to add a new filesystem, you are first prompted for the new *mount point*, or directory, for this new filesystem and the device on which to build the filesystem.

Next, a screen similar to the following will appear:



The options displayed here are for a “ufs” filesystem. If you change to a different filesystem type, the options will change as well. We won’t describe the options in detail since you have much information available with the **F1** (help) key. Also use the **F4** key to show lists of available options.

The options common to all filesystems are:

**Create Option** – Here you can press F4 to select **Create the filesystem only**, or **Create it and restore the data**, or **Delete** (filesystem will not be created or restored). Although the filesystem data may be on the backup, you can choose to create the filesystem without actually restoring the data into it.

**Mount point** – You can change the directory where the filesystem will be mounted. The data is restored relative to this directory, so the contents, if any will not change. You cannot change the mount point of the **root (/)**, **/boot** or **/usr** (if any) filesystems.

**Device** – Here you can select a new device where the filesystem should be created and/or restored. Possible filesystem devices are *disk slices*, [meta-devices](#) (SVM) and [Zpool Virtual Devices](#). When pressing **F4** at this field, you will get a list which contains the devices currently assigned and any devices that are not already assigned. Press Enter on any line to assign the device to the filesystem.

**Filesystem type** – Here's where you can select the type of filesystem to create. Only the filesystem types supported by BOTH the boot media and the backup to be restored will be selectable within this field. Changing this field will change the options while appear in the **Additional options** section below.

**Mount options** – **F4** at this field will display a lengthy list of mount options which apply to all filesystems as well as additional mount options specific to the selected filesystem type. You can combine them in most cases, and some options, when selected, will prompt you for additional input. In most cases, you can use "default". Don't change these unless you know what you're doing.

**Additional Options** – Various options such as *block size*, *fragment size*, *label id*, etc, will appear, based on the **filesystem type** selected. The options vary for each filesystem, and the list of available selections under each option will also vary depending on both the filesystem type and the other options selected.

## Filesystem Size versus Device Size

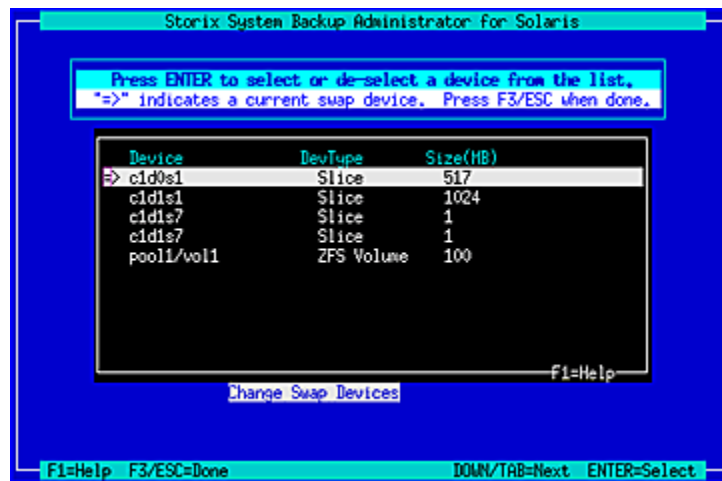
The minimum filesystem size displayed at the bottom of the screen the size of the data in the original filesystem that was backed up. The size of the device may have to be quite a bit larger depending on the amount of space the filesystem metadata requires.

SBAdmin tries to keep track of the minimum size of the device based on the amount of data to be restored, and this calculation varies based on the filesystem type and many other options that are configurable here. If you change any of the options, such as the **fragment size**, **block size**, or **number of bytes per inode** in a filesystem, the amount of free space may be adversely affected. Be sure you have plenty of free space available (based on the size of the device) in case the change requires more space than the filesystem previously needed.

When you have finished your changes, press **F3** or **ESC** to return to the list of filesystems, then **F3** or **ESC** again to return to the [Change Settings](#) menu.

## Change Swap Devices

Use this option to select the device or devices which should be used as swap devices (also known as *swap space* and *paging space*) on the system. Solaris supports *disk slices*, [meta-devices](#) and [ZFS volumes](#) for swap devices. When selecting this option, a screen similar to the following will appear:



If an arrow (⇒) appears next to a device, then that device is currently configured as a swap device. To select an unselected device, highlight the desired line and press **Enter**. If you do not want to use that device for swap, press **Enter** and the arrow will disappear. If removed, the device will then be unassigned and may be used for other features, such as filesystem data.

When you've completed your selections, press **F3** or **ESC** to return to the [Installation Settings](#) menu.

# 7. Install the System

To install the system from the [SBAdmin System Backup](#), you first must have selected the [Installation Device](#) (which may be located on a local or remote host). You then have the option [View/Change the Installation Settings](#), where you can make any changes to the backup information stored on the backup media. If you used that option, then the backup information was already restored from the backup, verified and modified as needed to ensure the installation can be started.

## Verification Process

If you select the option **Install the System with Current Settings**, this backup data will be checked (again if necessary) to ensure the defined devices and filesystems can be created successfully. Here are a few things that are checked:

1. The devices, filesystems, and *SVM/ZFS* devices defined on the backup are checked to ensure the support is available from the boot media to recreate them.
2. Ensures any backup data previously residing on a disk is assigned to a new disk unless the user explicitly chose not to restore data.
3. Verifies that all devices assigned to *SVM meta-devices* and *ZFS virtual devices* are valid and that there are enough devices assigned for the appropriate RAID level.
4. Checks that *SVM meta-devices* and *ZFS pools* are large enough to hold the filesystems and volumes defined.
5. Validates the *FDISK partition table* and *slice table* and removes any “gaps”.
6. Verifies that partitions will fit onto their respective disks, and that slices will fit into their disks (SPARC) or partitions (Intel). It also verifies that partitions or slices begin at disk track boundaries (in case the disk geometry has changed), where required. Each table is modified as needed to correct boundaries, sizes and to remove “gaps”.
7. Checks that all filesystems are being created on devices large enough to restore the data. Even if a device has not changed, the requirements may change if, for instance, the filesystem type was changed to one which requires more space for filesystem metadata than was previously needed.
8. Verifies that the root filesystem is being restored and the device on which it is defined is still valid.
9. Verifies that the configuration conforms to boot loader requirements of the specific system type.

If any problems are detected, you will be informed of the problem and a recommended solution. In some cases the process will offer to fix the problem for you, or even automatically reduce the sizes of partitions containing filesystem data to make the partitions fit onto a disk. If problems persist, you will need to return to the [Change Installation Settings](#) menu to make any changes required to restore the data (or select not to create certain devices or restore certain data).

## Starting the Installation

If all checks out, you are given one final warning:

```
!! YOU HAVE SELECTED TO INSTALL THE SYSTEM !!
If you continue, all data on the following disks
will be ERASED and OVERWRITTEN:
Disk name  Contents  Size(MB)
c1d0      Partitions 38162
c1d1      Partitions 4028
Are you sure you want to continue with the system
installation? (y/n) 
```

Press “y” to continue the installation or “n” to return to the [Main Menu](#).

If you choose to continue the install, the system will begin by reading additional information from the backup media, then creating the devices and filesystems that are defined. After the devices are created, all filesystems are created and mounted.

If the backup was **encrypted** when it was created, you will be asked to enter the *encryption key* to decrypt the data during the installation. If the correct key is not entered, you will not be able to continue the installation. Refer to [Installing from an Encrypted Backup](#) for more information.

As the data is restored from the backup, a progress indicator will appear showing the status of the restore including the estimated amount of data and time to completion. When all data for all filesystems, volumes, partitions or meta-devices (if included on the backup) is restored, the system will perform some cleanup and post-installation processing and attempt to make the system bootable.

## Installation Errors

If any error occurs in creating the devices, creating or mounting the filesystems, or restoring the data, you will be provided a message containing the details and the failing command and asked to correct the process manually before continuing the installation. At this point you are placed at a shell prompts where you can diagnose and correct the problem. The command which failed must be completed before the installation can continue successfully. When the problem is corrected, type “**exit**” to exit the shell and continue the installation.

## System Boot Problems

The SBAdmin installation process does its best to prevent you from making any changes that might prevent the system from booting. For example, you are not allowed to put the /boot filesystem on a meta-device since boot loaders can’t read the boot configuration or kernel from a meta-device.

The most common boot problem after an install is simply that your system firmware is trying to boot from the wrong device. First remove any removable boot media from the system and try again. If you changed the disk containing the /boot (or root if no /boot) filesystem, you may need to tell your firmware to boot from the new disk. Each firmware used has different menu options, and also names the disks differently, so you will have to refer to your system documentation for details.

Once the root filesystem is available during reboot, control is turned over to the normal system initialization procedures. Any errors that occur at this point will not usually render the system unusable, but may require additional customization (beyond the scope of SBAdmin) to restart all system processes in the correct order.

Should all else fail, at least we know that the system has been configured and restored successfully, so we just need to figure out how to get it to boot. Your SBAdmin Boot CDROM can help. You can boot from the CDROM, and when the menus appear, select “[Enter a Maintenance Shell](#)”. You can then perform system maintenance commands to mount any filesystems, diagnose the problem and make the system bootable.

Should any system, even when changing the disk configuration, not startup at the end of the installation process the same as the original system, you should report the problem to Storix immediately. With the vast number of Solaris versions and releases, and platform support, it’s virtually impossible for Storix to test every scenario, but will ensure that your system gets up and running!

## Network Re-configuration (avoiding conflicts)

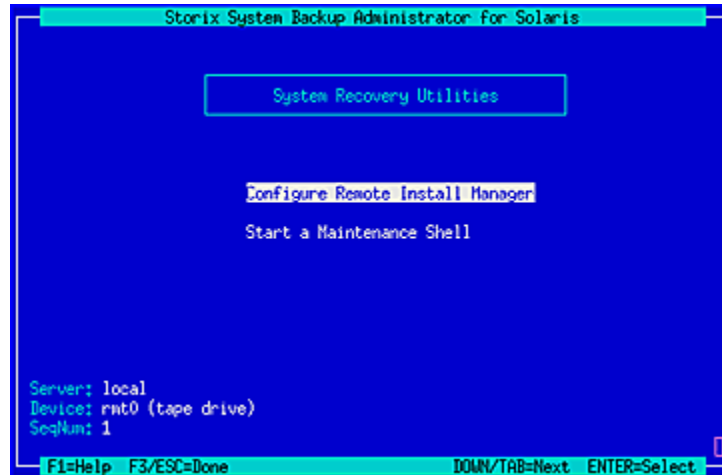
If the system is reinstalled from a *remote install server*, then you entered the client IP address when either booting the system, or when selecting to restore from a remote server. In either case, the client IP address entered will be used to reconfigure the network adapter information restored from the backup. In addition, any additional network adapter configurations restored from the backup will be disabled on reboot.

This is important when a single backup is used to reinstall multiple clients, as each client will then reboot with its own customized network configuration, regardless of that on the backup. Network adapters not used during the installation are disabled on reboot to prevent any duplicate IP addresses (i.e. this system and that of the original client the backup was taken from).

If, however, you installed the system from local boot media (CDROM or hard disk), the new network configuration, if different, is not known. It is assumed that the backup being restored came from the same system, and the network configuration is unchanged. Therefore, when the system reboots at the end of the install, it the network will configure with the original settings restored from the backup. If the backup contains IP addresses used by another system on the network, you should unplug the system from the network to prevent IP address conflicts until you have changed the network settings on the newly restored system.

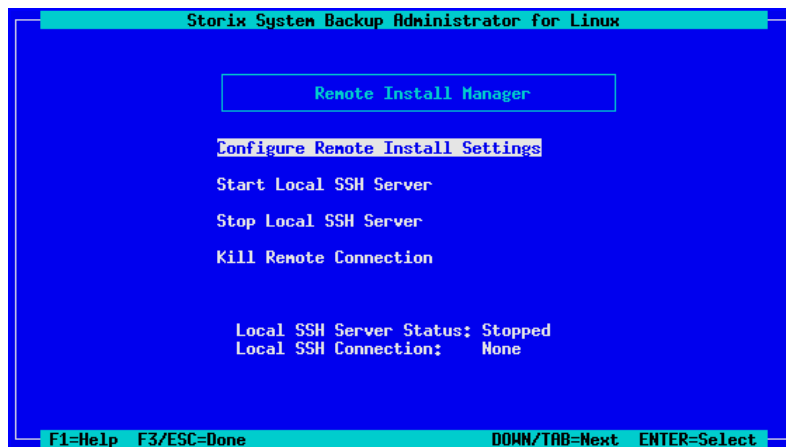
# 8. System Recovery Utilities

From the [System Installation and Maintenance Main Menu](#), select **System Recovery Utilities** to display the following options:

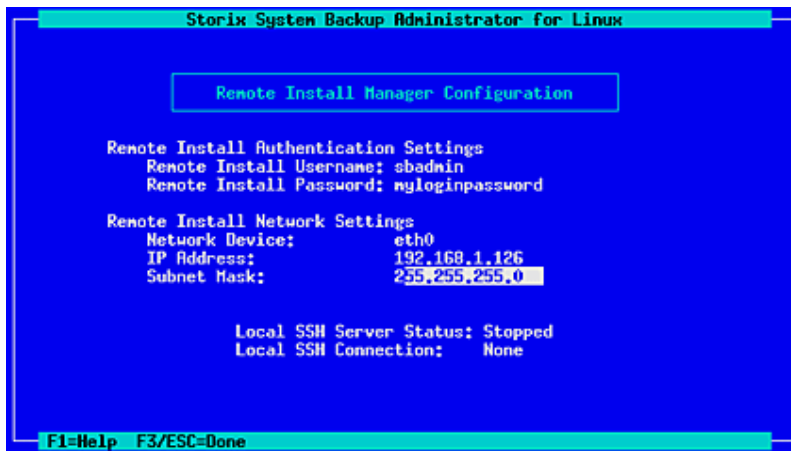


## Configure Remote Install Manager

If you configured RIM at the time you created the boot media, it will be automatically enabled and it will not be necessary to configure in this option. If, however you did not pre-configure RIM, or if you need to change the RIM configuration (network adapter, IP address or subnet, or if you forgot the password you previously assigned), you can configure and enable RIM from within the *system installation menus* after booting from the SBAdmin boot media. To do so, select the **System Recovery Utilities** option from the main menu to display the following:



Select **Configure Remote Install Manager**. The following screen will display:



1. The **Remote Install Username** is set to “sbadmin” and may not be changed. Enter a password in the **Remote Install Password** field. The password will be necessary to login to the remote install client.
2. Select the **Network Device** (adapter) that should be configured to connect to the remote install client.
3. Enter the **IP Address** used to configure the network adapter. Note that, if the selected adapter is already configured (as a boot or install device) and you enter a different IP address than the adapter is currently using, you will be provided a warning and allowed to continue. If you do so, however, the previous settings will no longer apply, and the adapter will be reconfigured under the new IP address.
4. Enter the **Subnet Mask** (if necessary) used when configuring the network adapter. As with the IP Address, if the adapter is currently configured under a different subnet mask, you will be warned and allowed to reconfigure the adapter under the new subnet mask.

When you have finished your selections, press **ESC** or to return to the [RIM Menu](#). Then select [Start Local SSH Server](#). The network adapter will be configured with these settings and the RIM server will be started. You can see the current status of the RIM server by looking at the **Local SSH** settings which appear on the screen.

## Start a Maintenance Shell

Selecting this option will put you at a **Korn (ksh)** shell, from which you can enter various system maintenance commands. Should any error occur during the system installation that prevents the process from continuing, you will be automatically placed at this prompt.

When entering the shell from the installation menus, you can simply return to the installation menus by exiting (typing “exit”) from the shell.

# Index

## A

ascii  
  encryption key, 24  
autoloader, 28

## B

backup sequence number, 27, 28  
  network install, 16  
BIOS, 19  
  CDROM boot, 19  
  networkboot, 20  
boot  
  booting to install process, 19  
  problems, 56  
boot loader, 6  
  definition, 5  
boot media  
  cdrom, 8  
  creating, 7–18  
  disk, 9  
  network, 9  
  SCSI CDROM, 8  
  USB CDROM, 8  
  when to make, 7  
boot server. *See* network boot server  
booting, 19, *See also* network boot  
broadcast boot, 16, 20

## C

cdrom  
  create ISO image, 8  
  SCSI cdrom support, 8  
  USB cdrom support, 8  
CDROM  
  booting, 19  
client  
  booting for system installation, 19  
  network installation, 14  
cloning systems, 22  
configure  
  network boot/install, 14  
  network boot/install client, 15

## D

dataset. *See* ZFS dataset  
decrypt. *See* encryption  
disk  
  configure boot disk, 9  
disk backup file  
  local install device, 28

  network install device, 30  
disks  
  selecting for installation, 35–39

## E

encryption, 24, 56  
  installing, 23  
  software, 2

## F

filesystems  
  adding, changing, removing, 52  
  definition, 6  
  types, 52  
firmware, 5  
  definition, 5

## H

hard disk. *See* boot media: disk  
help, 25  
  system installation menu, 25  
hex  
  encryption key, 23  
hot spare pool  
  assigning, 43, 44  
  description, 40  
  meta-device, 45

## I

install  
  from system backup. *See* system installation  
install device  
  parallel virtual device, 27  
  sequential virtual device, 28  
install server. *See* network install server  
installation. *See* system installation  
ISO. *See* boot media: cdrom

## K

keys. *See* encryption

## L

LVM  
  definition, 6

## M

MAC address, 16  
menu  
  system installation and maintenance, 20

- meta-device
  - definition, 40
  - terminology, 40
- meta-devices
  - swap device, 53
- mirror
  - meta-device, 43
  - meta-device description, 40
  - ZFS virtual device, 49
- mount point
  - ZFS dataset, 50
- MSDOS
  - filesystem, 6

## N

- network, 14
  - adapter hardware address, 16
  - alternate install server, 16
  - re-configuration after system install, 57
- network adapter
  - hardware address, 20
  - remote installation manager, 12, 59
- network boot, 20
- network boot server, 9, 14, 15, 17, 18, 20, 24
- network boot/install, **14**
  - alternate install server, 17
  - boot image
    - creating, 9
    - updating, 18
  - boot loaders, 9
  - boot server, 9, 14, *See* network boot server
  - install device, 16
  - install server. *See* network install server
  - installing different AIX levels, 18
  - unconfigure install client, 16
  - using alternate network, 17
  - using different boot and install servers, 17
- network install device
  - disk backup file, 30
  - tape, 30
- network install server, 14, 16, 17, 18, 30
  - changing during install, 26
- no-prompt install, 10
- no-prompt install, 15
- no-prompt install, 20
- no-prompt install, 22

## O

- OpenBoot, 19
  - CDROM boot, 19
  - networkboot, 20
- OpenFirmware, 5

## P

- paging space. *See* swap devices
- parity
  - meta-device, 44
  - meta-device description, 40
- partition
  - migrating, 37
  - PCFS, 6
- partition table
  - changing, 36, 37
- partition table, 55
- PCFS, 6, 52

## R

- RAID
  - level 0
    - ZFS virtual device, 49
  - level 0 meta-device. *See* stripe
  - level 0+1, 46
  - level 1
    - ZFS virtual device, 49
  - level 1 meta-device. *See* mirror
  - level 5
    - ZFS virtual device, 49
  - level 5 meta-device. *See* parity
  - level 6
    - ZFS virtual device, 49
- raid devices
  - descriptions, 40
- RAID devices
  - meta-devices, 42
- raidz1
  - ZFS virtual device, 49
- raidz2
  - ZFS virtual device, 49
- recovery. *See* system installation
- remote install manager
  - configuring from install menus, 58
- remote installation manager, 11
- replication database
  - adding, changing, removing, 41
- reservation
  - ZFS dataset, 50
- RIM. *See* remote installation manager

## S

- SCSI
  - cdrom support, 8
  - slice, 40, 41, 44, 45, 46, 47, 49, 53
  - filesystems, 6
  - install settings, 33
  - migrating, 37
  - position, 39
  - SVM, 6

- ZFS, 6
- slice table
  - changing, 37, 38
- slice table, 55
- soft partition, 40, 44, 46
  - description, 40
  - meta-device, 44
- Solaris Volume Manager. *See* SVM
- spare
  - ZFS virtual device, 49
- ssh program, 12
- strimsh program**, 12
- stripe
  - meta-device, 42
  - meta-device description, 40
  - ZFS virtual device, 49
- SVM, 40
- swap devices, 53
- system backup
  - network install, 14
  - system installation, 22
- system backup disk
  - local install device, 28
- system installation
  - booting, 19
  - booting in installation mode, 19
  - cloning systems, 22
  - device, 26
  - errors, 56
  - install device
    - changing, 26
    - selecting a remote device, 30
  - installing the system, 55
  - main menu, 21
  - mode, 15
  - network install server
    - changing, 26, 29
  - no-prompt install, 10, 22
  - settings, 33, 54
  - starting, 56
  - verification, 55
- system recovery. *See* system installation
- system recovery utilities, 58–59

**T**

- tape
  - autoloader, 27, 28
  - local install device, 27
  - network install device, 30
- tape drive
  - local, 27

- parallel, 27
- remote, 30
- sequential, 28

text
 

- encryption key, 24

Tivoli. *See* TSM

TSM
 

- administrative user, 33
- client, 32
- configuration, 31
- server, 33

## U

- UDFS, 6, 52
- UFS, 6, 47, 52
- USB
  - cdrom support, 8
- utilities. *See* system recovery utilities
  - configure remote install manager, 58

## V

- verify
  - hardware configuration, 24
- virtual device. *See* ZFS virtual device
- virtual devices, 27, 28, 30
  - parallel, 27
  - sequential, 28

## Z

- Zettabyte File System. *See* ZFS
- ZFS
  - description, 47
  - filesystem type, 52
- ZFS dataset
  - description, 47
  - filesystems, 49
  - name, 50, 51
  - volumes, 51
- ZFS filesystems
  - adding, changing, removing, 49
- ZFS pool
  - adding, changing, removing, 48
  - description, 47
- ZFS virtual device
  - adding, changing, removing, 49
  - description, 47
- ZFS volumes
  - adding, changing, removing, 51
- zpool. *See* ZFS pool